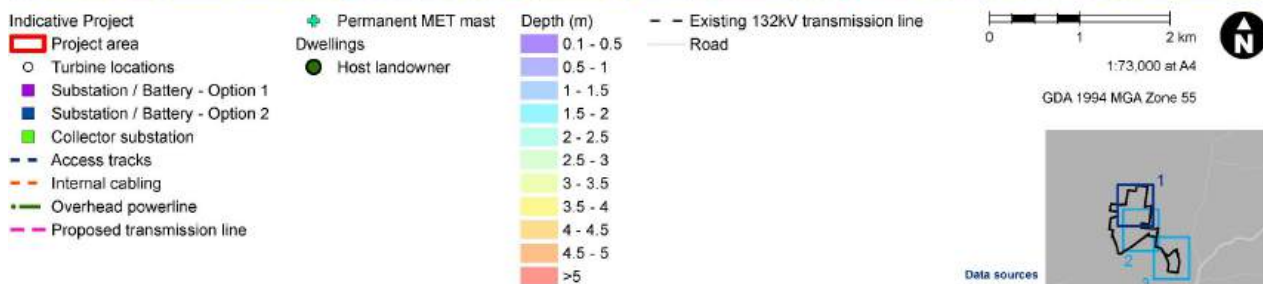
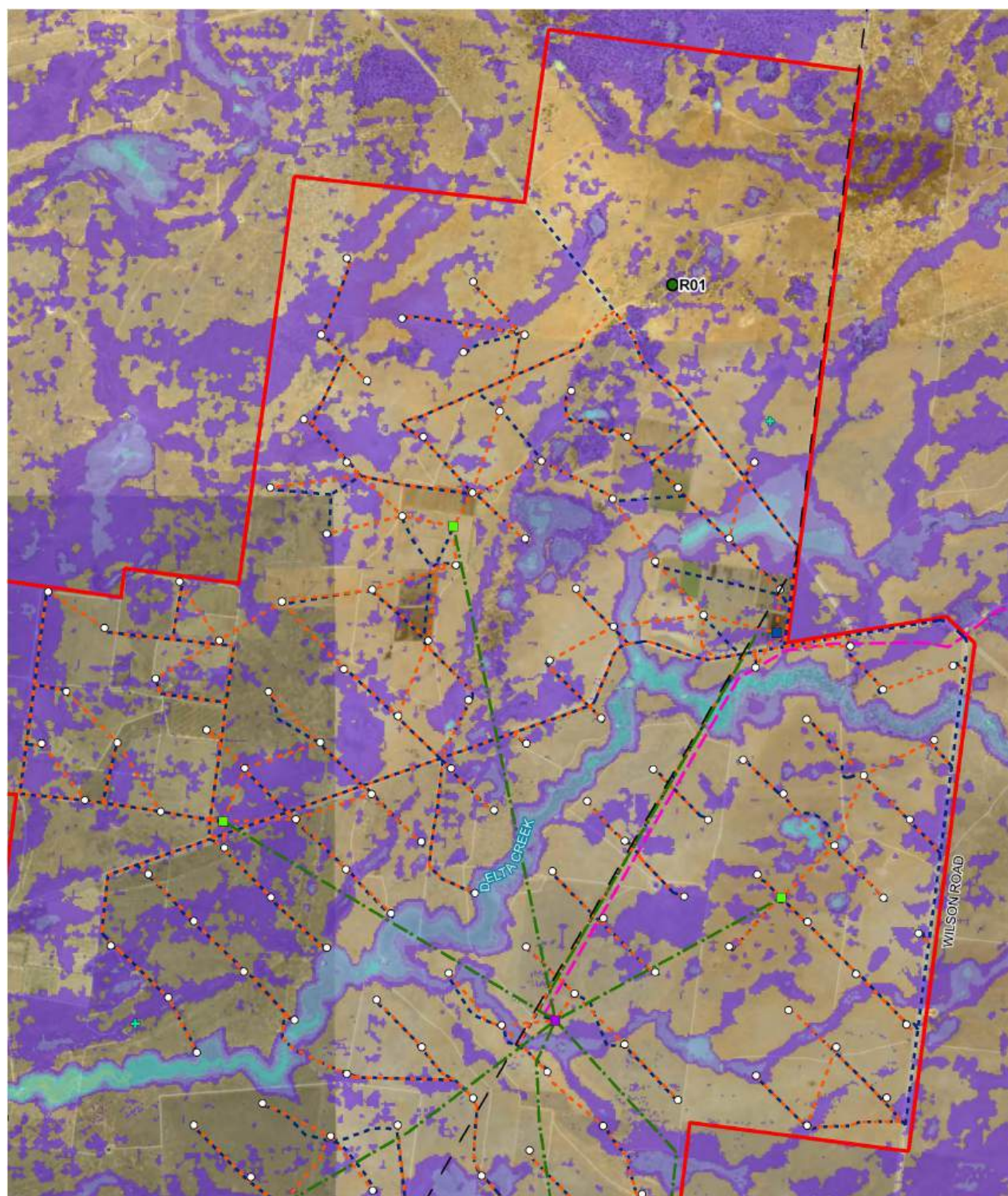
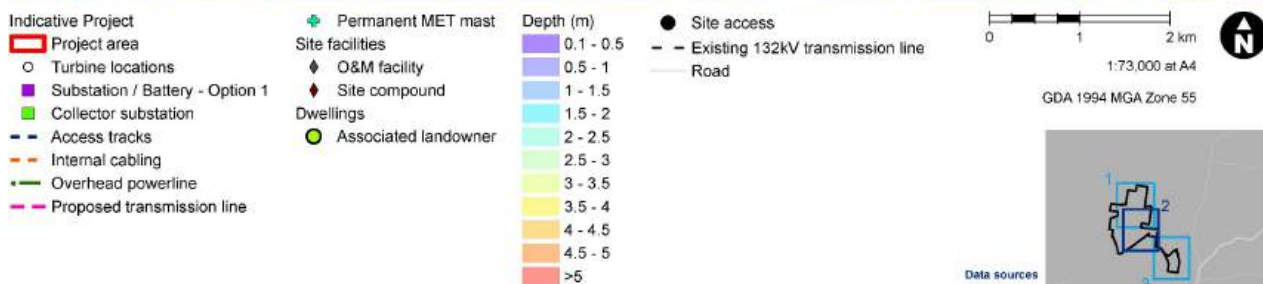
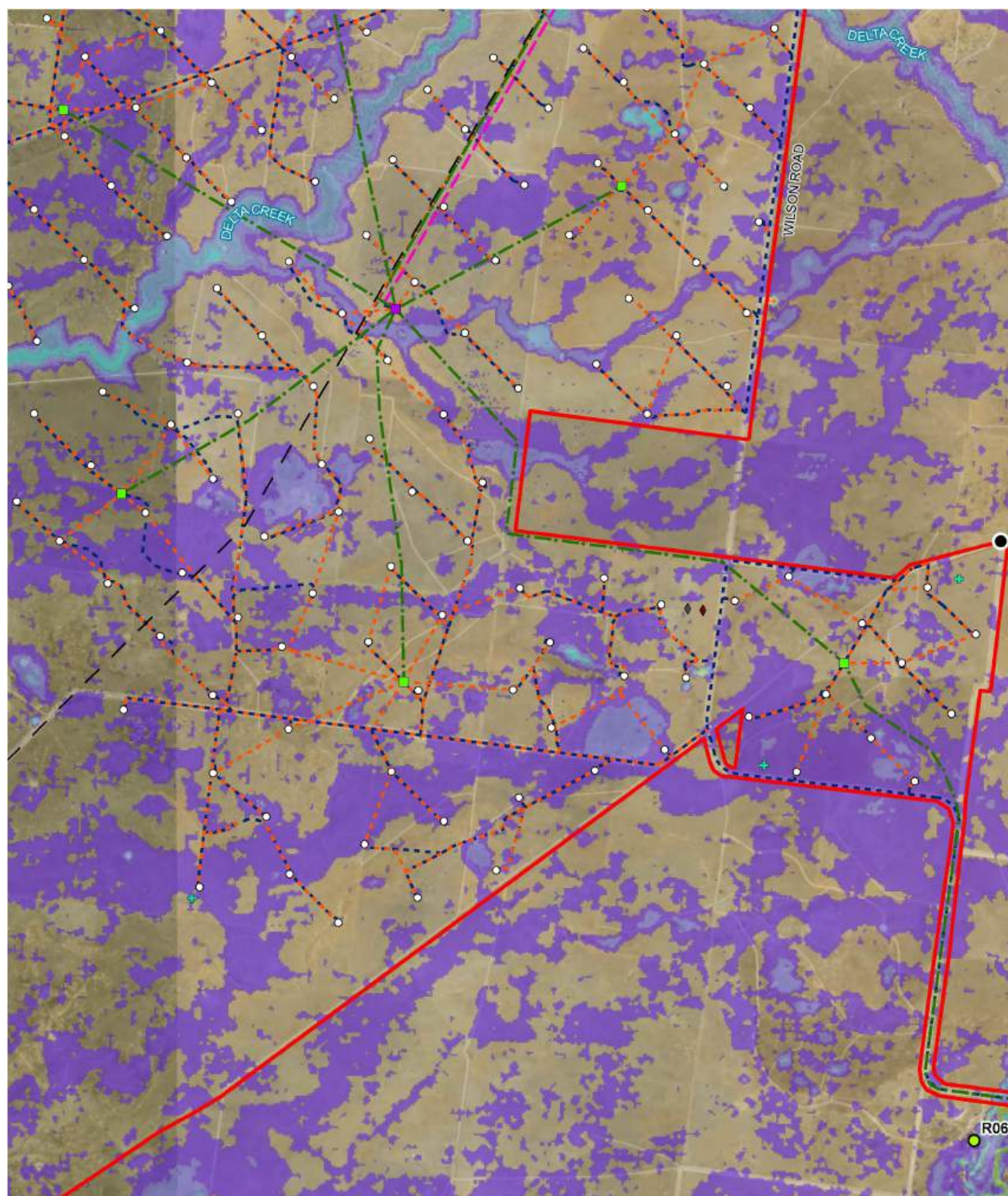


## Appendix B. Flood mapping for existing conditions



**Figure B-1 Flood depths and levels – 1% AEP event (Sheet 1)**





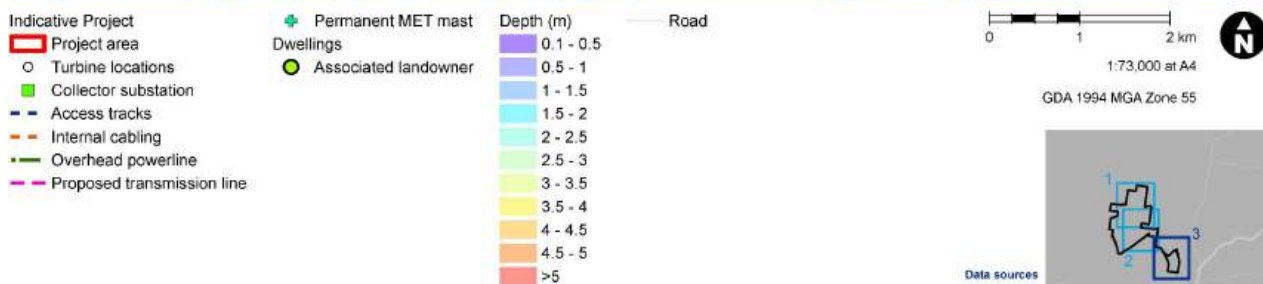
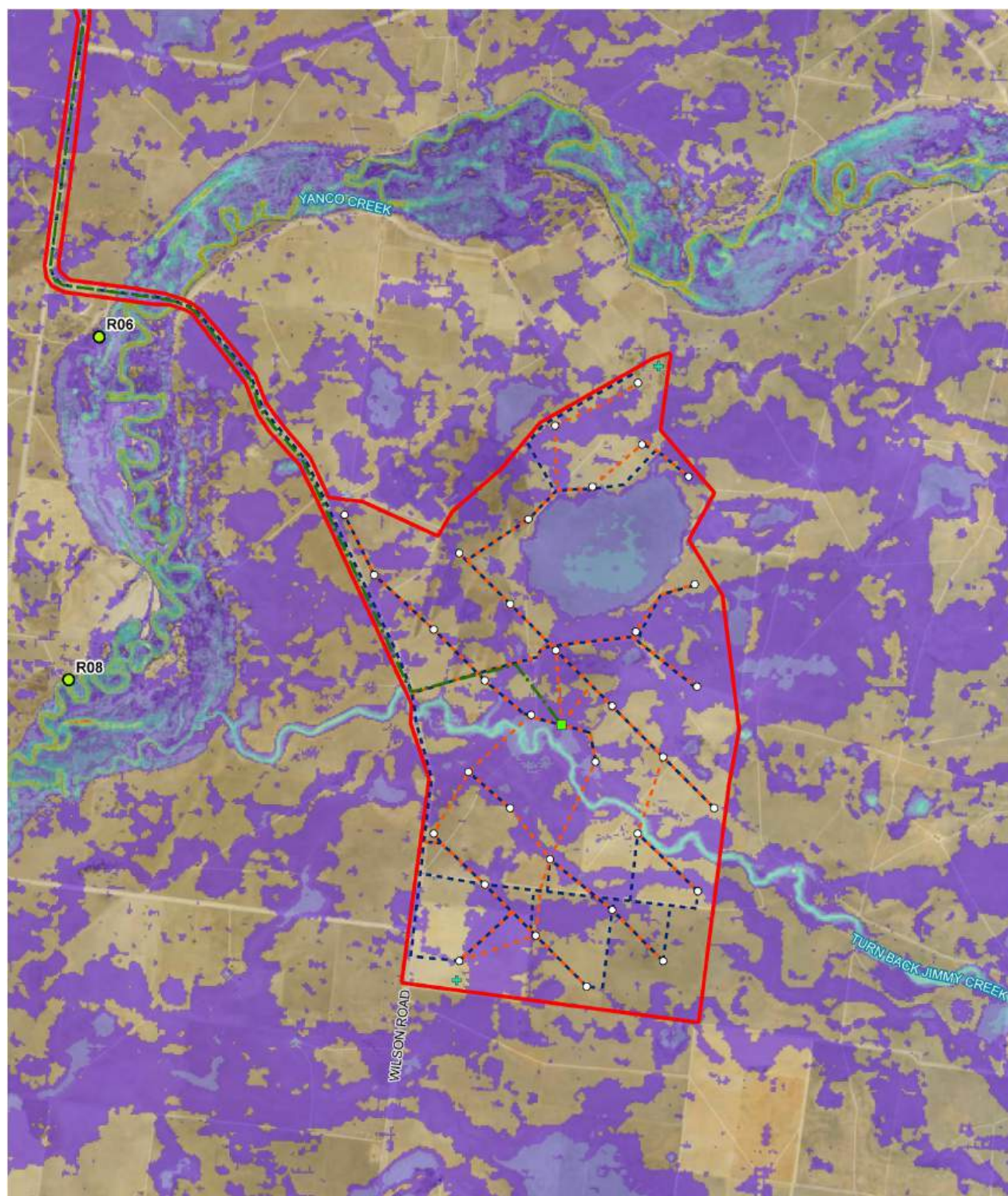
**Figure B-1 Flood depths and levels – 1% AEP event (Sheet 2)**

Jacobs NSW Special | Buildings & Infrastructure | Eastern Asia Pacific | www.jacobs.com

Data sources  
 Jacobs 2022  
 © Department of Customer Service 2020

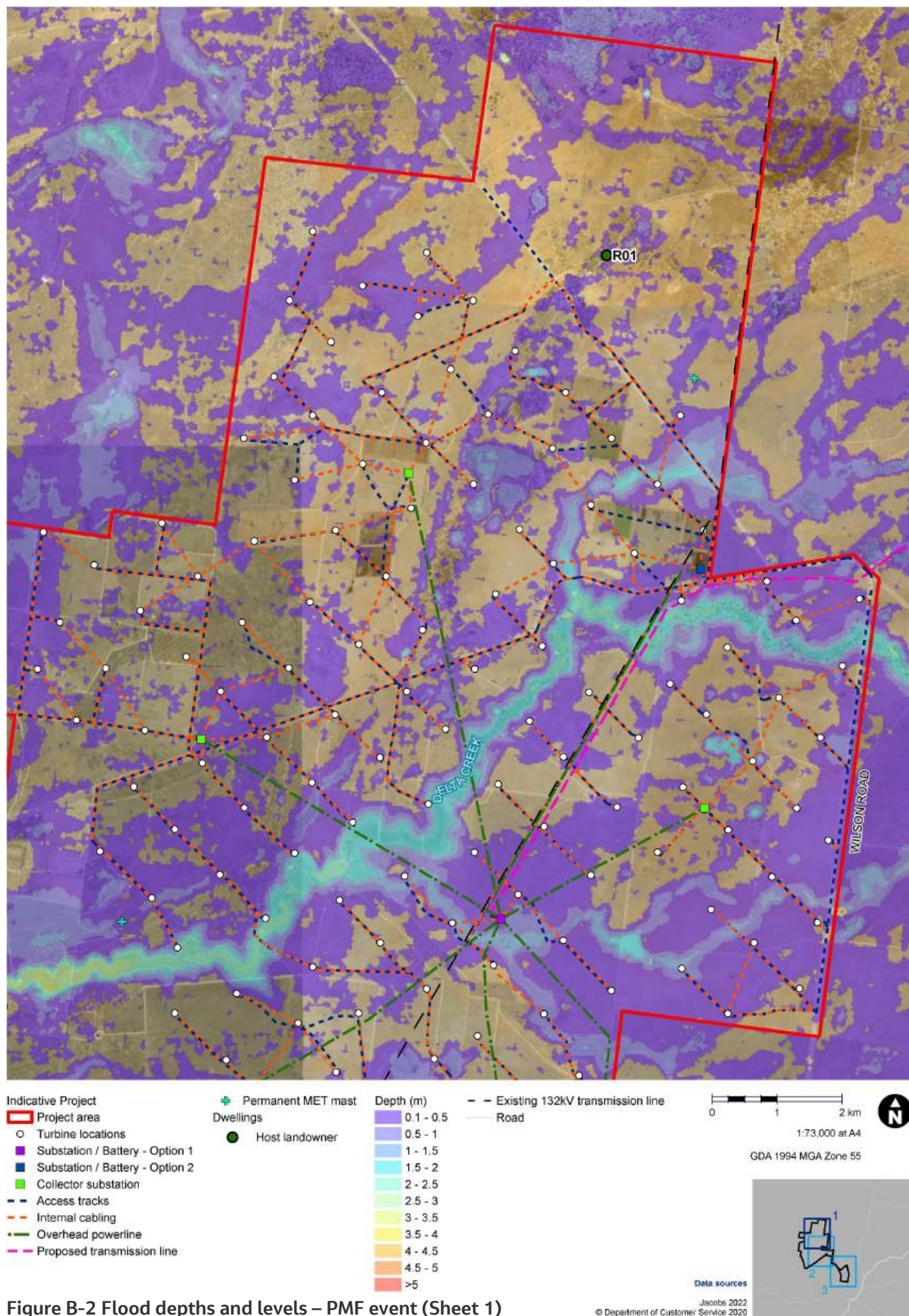
This information and concepts contained in this document are the intellectual property of Jacobs and are subject to the survey and detailed design. It is to be used for construction. Use or copying of the document in whole or in part without written permission of Jacobs constitutes an infringement of copyright. Jacobs does not warrant that this document is definitive nor free of error and does not accept liability for any loss caused or arising from its use or from information provided herein.





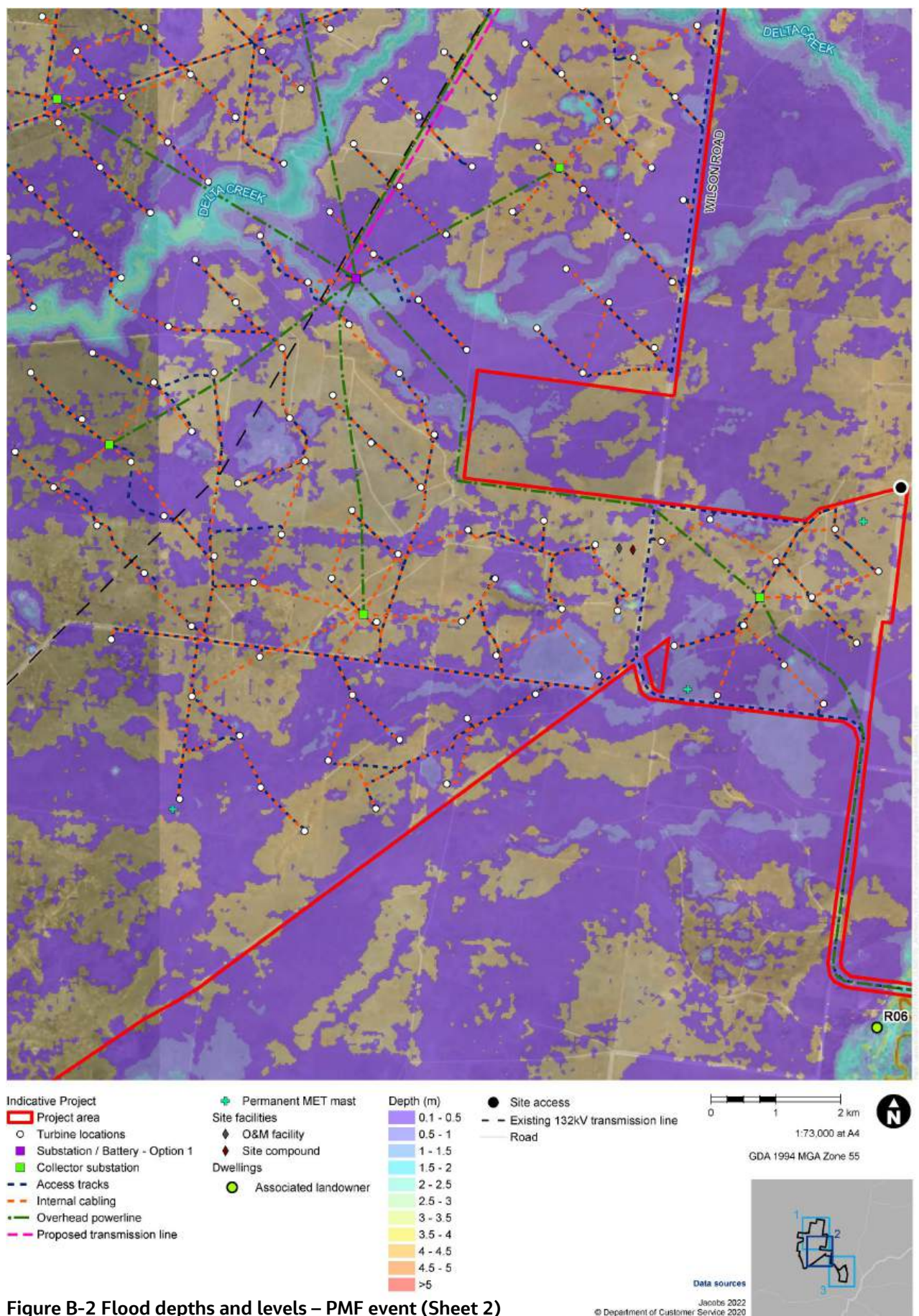
**Figure B-1 Flood depths and levels – 1% AEP event (Sheet 3)**





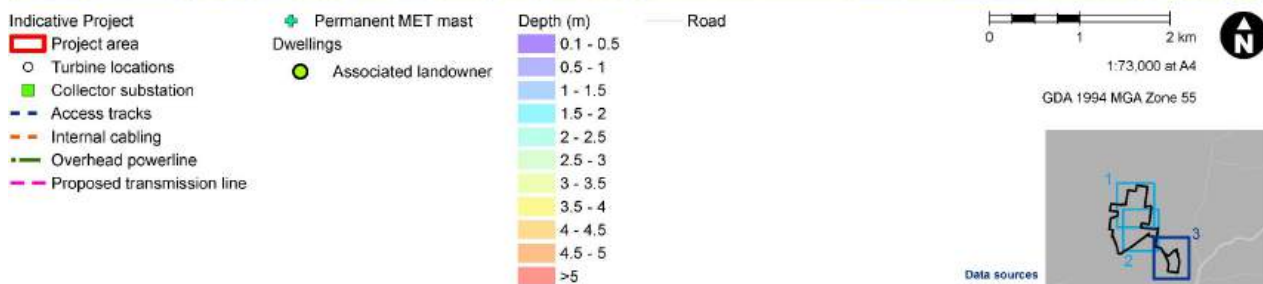
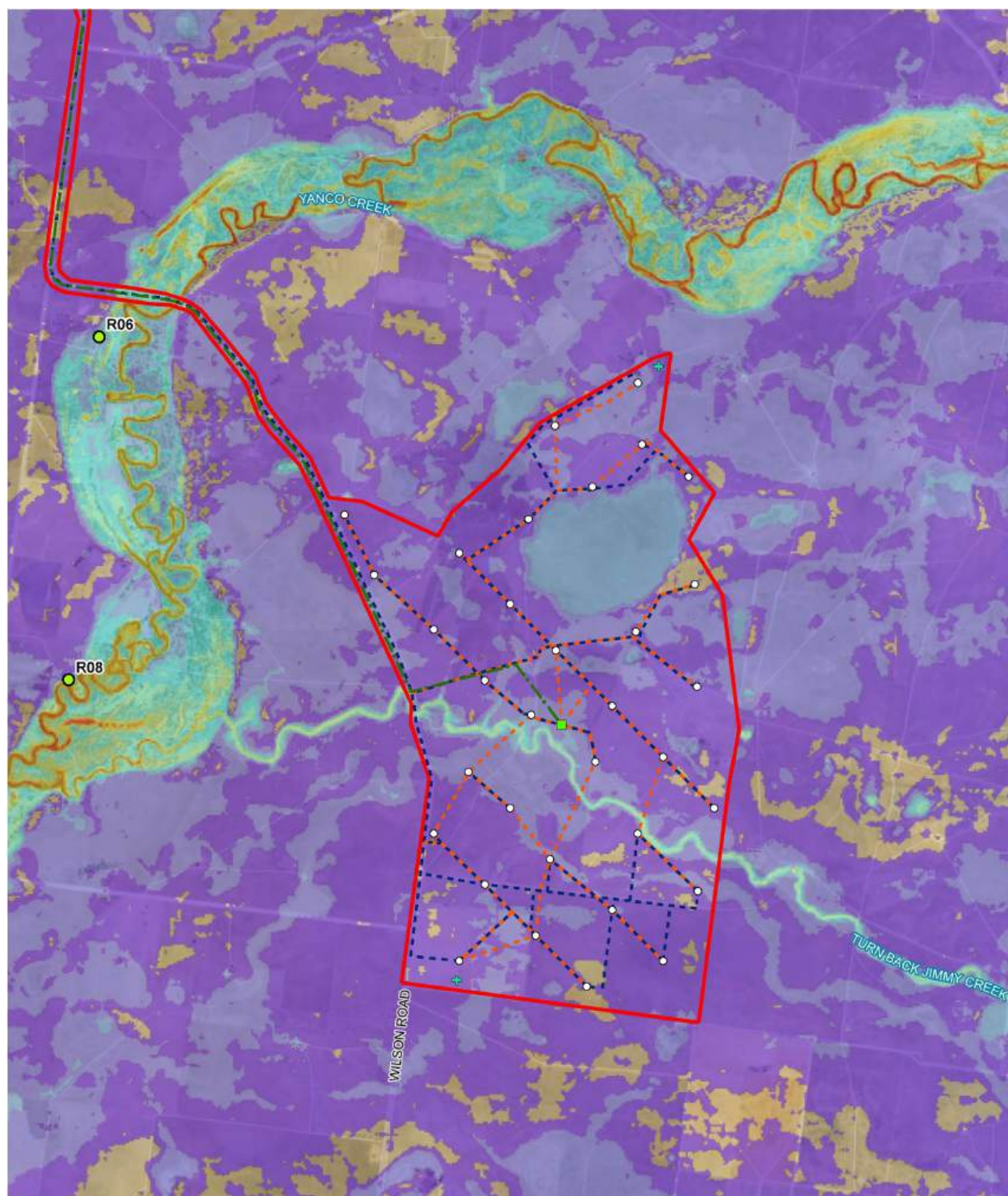
**Figure B-2 Flood depths and levels – PMF event (Sheet 1)**





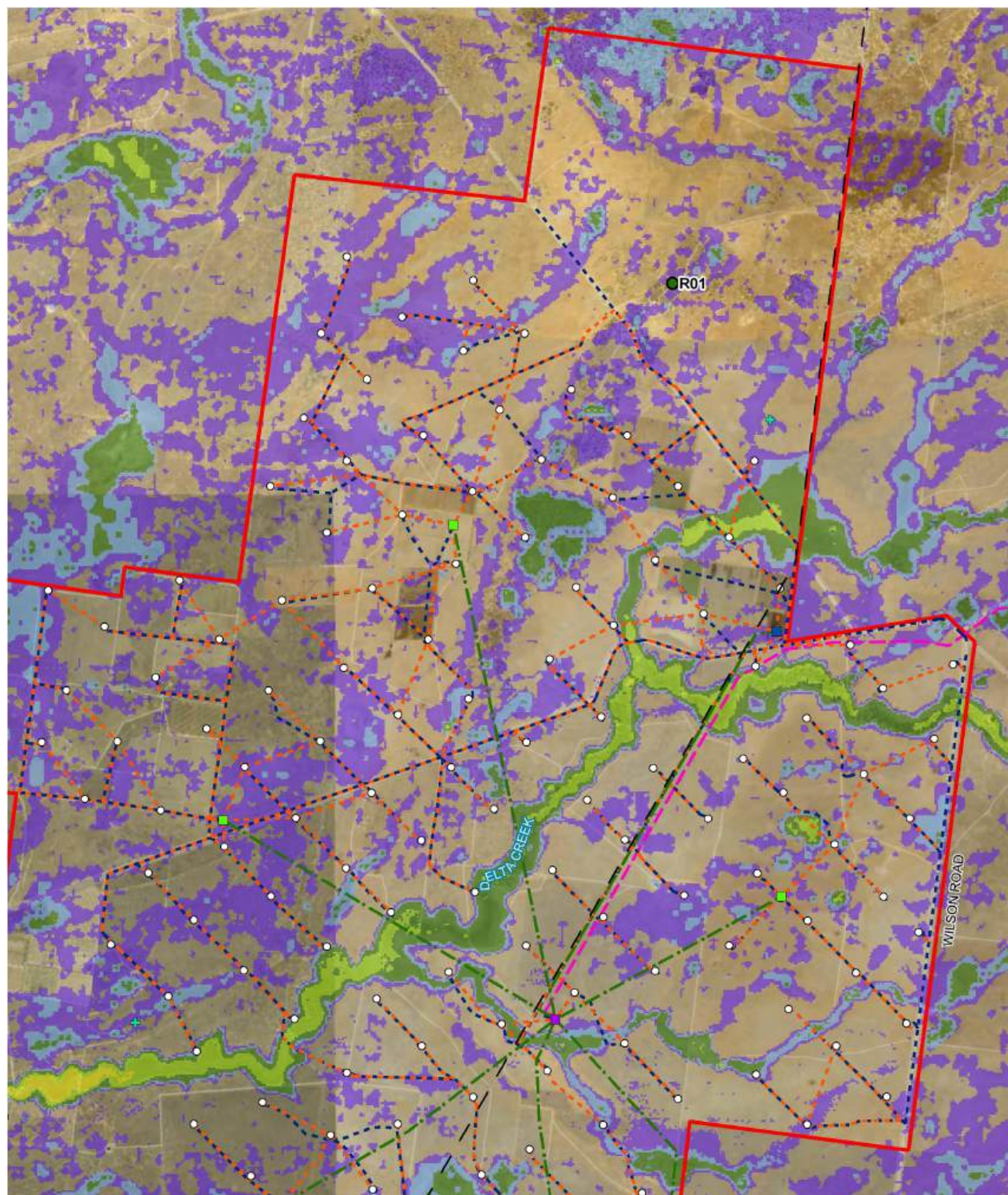
**Figure B-2 Flood depths and levels – PMF event (Sheet 2)**





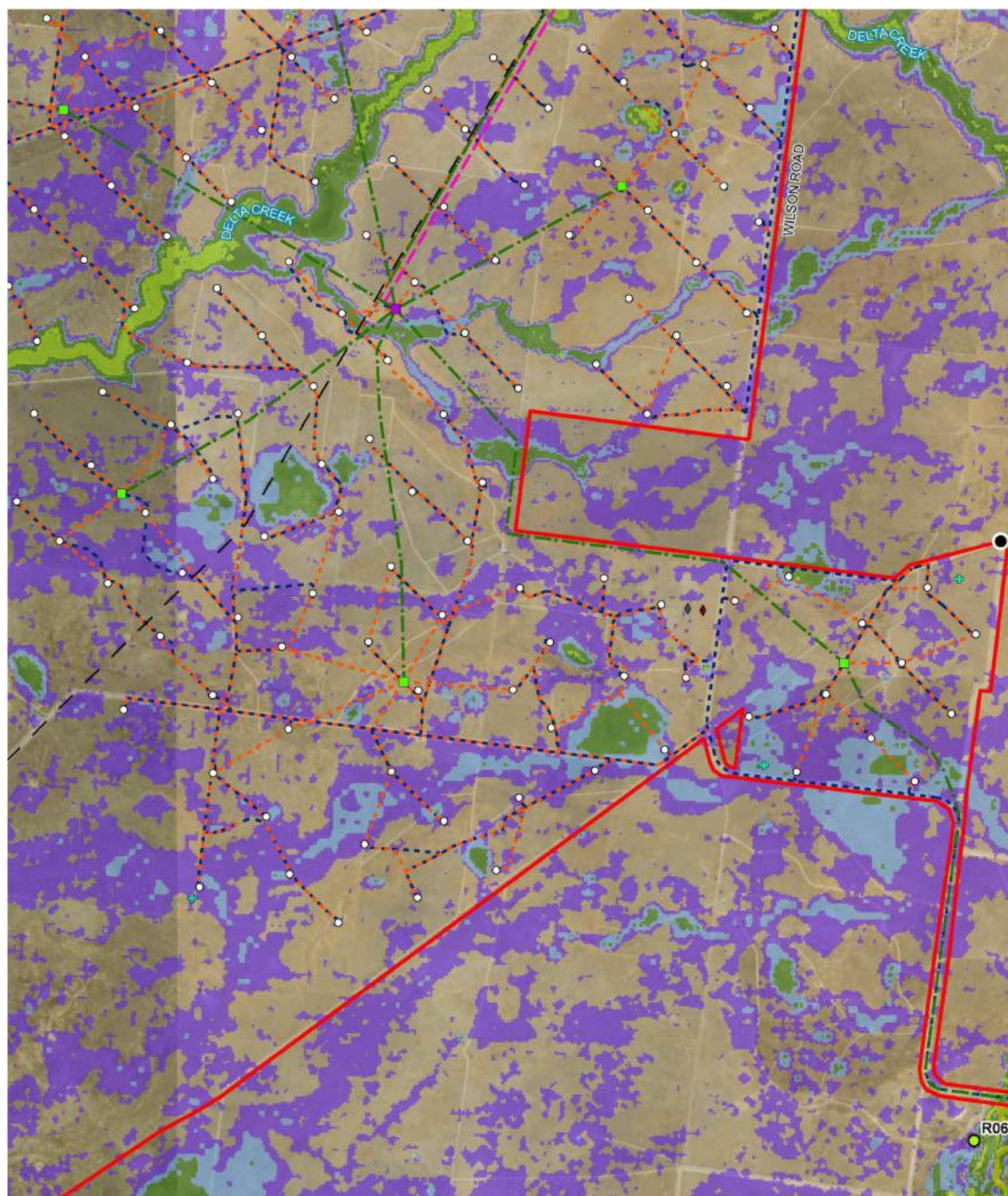
**Figure B-2 Flood depths and levels – PMF event (Sheet 3)**





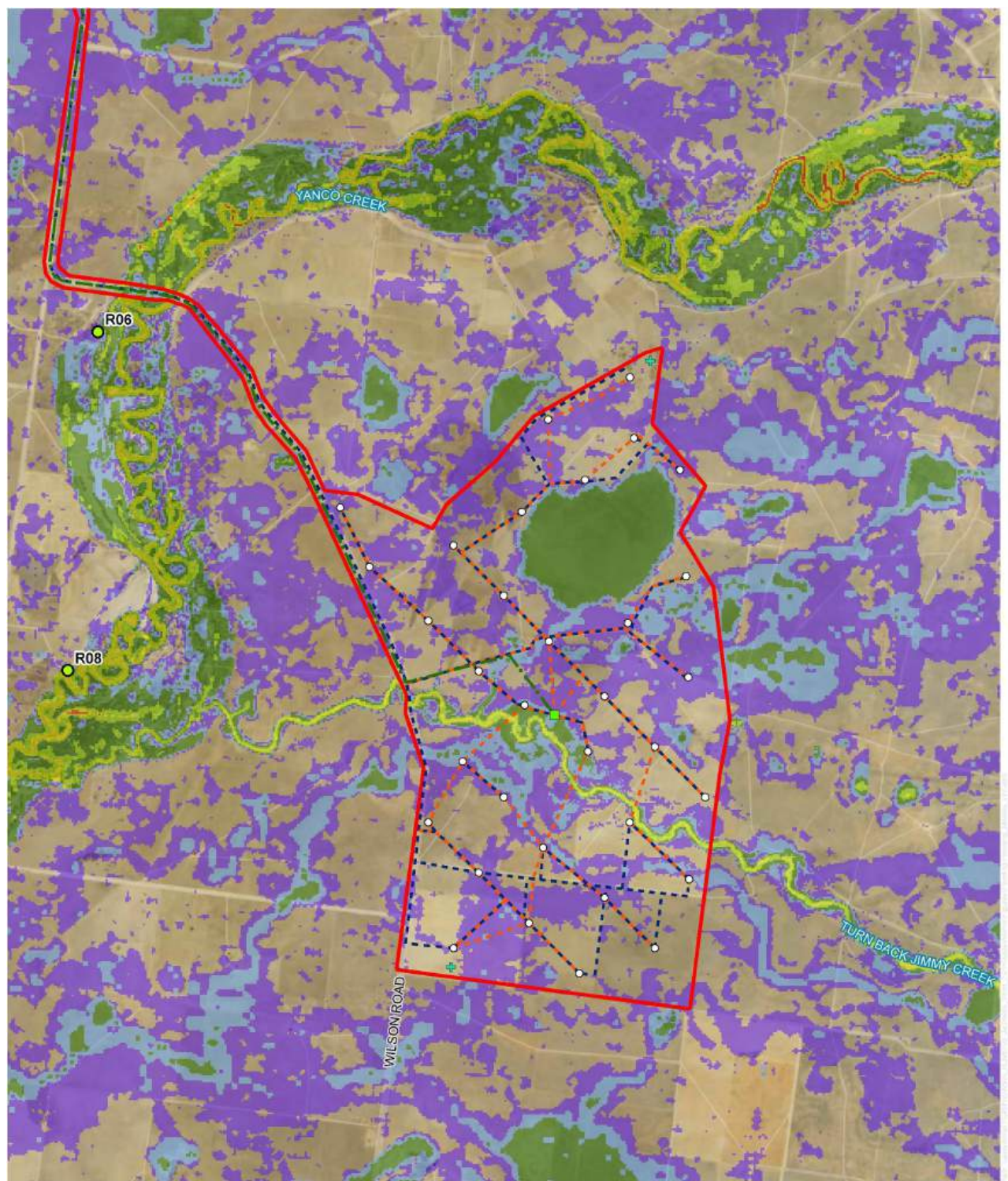
**Figure B-3 Flow velocities – 1% AEP event (Sheet 1)**





**Figure B-3 Flow velocities – 1% AEP event (Sheet 2)**





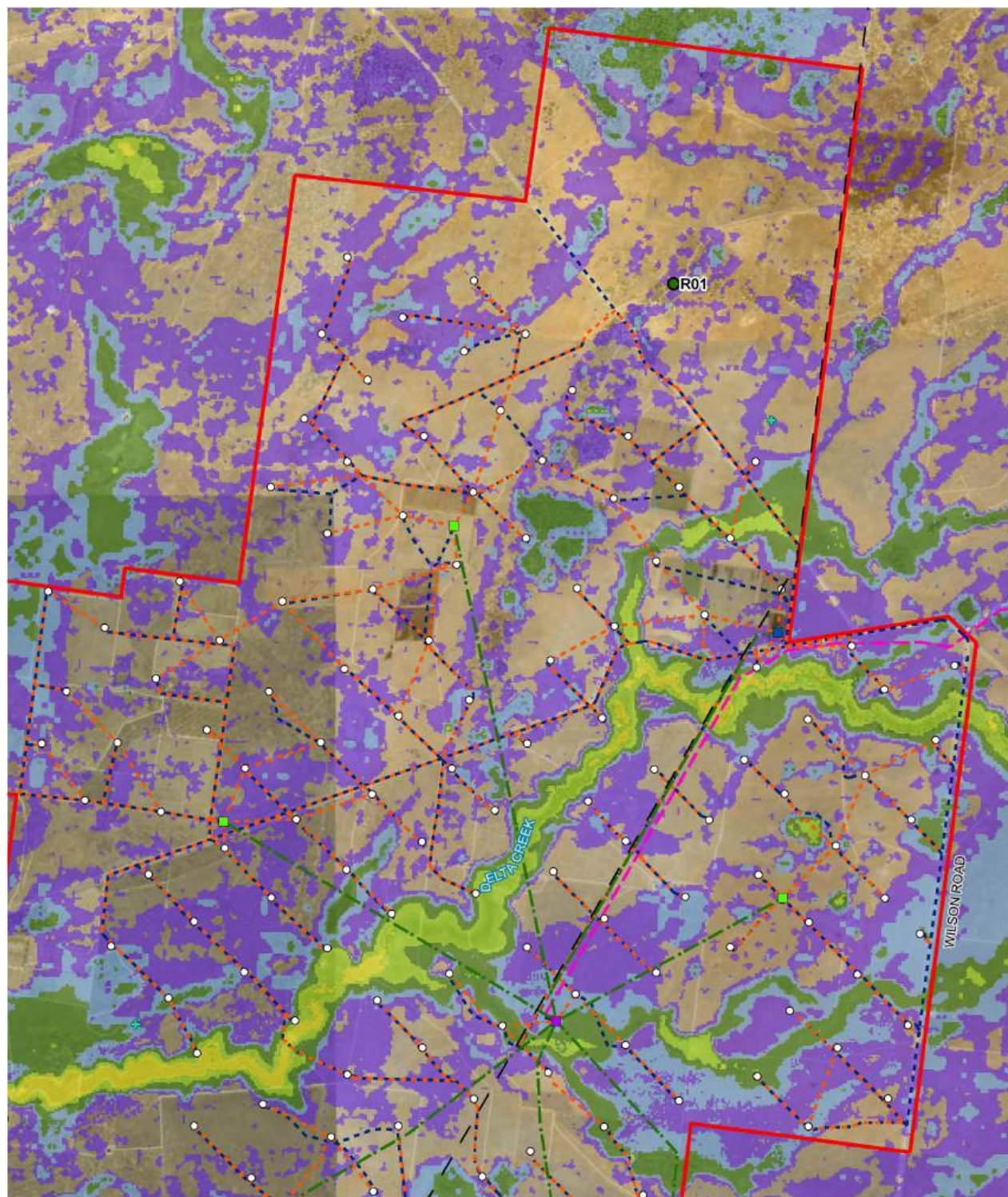
**Figure B-3 Flow velocities – 1% AEP event (Sheet 3)**

**Jacobs**

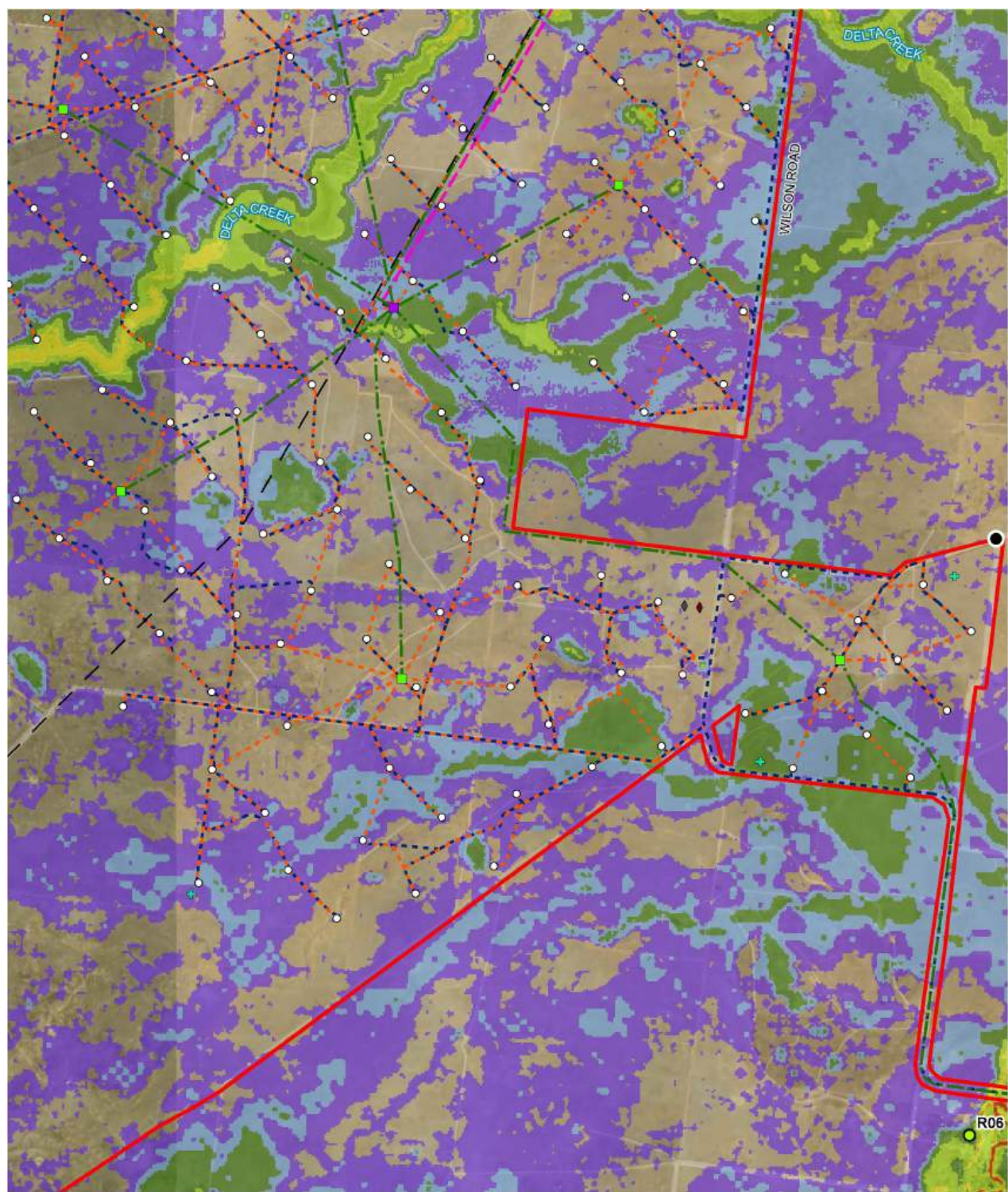
NSW Sprint | Buildings & Infrastructure | Eastern Asia Pacific | www.jacobs.com

The information and concepts contained in this document are the intellectual property of Jacobs and are subject to preliminary and detailed design. It is to be used for construction. Use or copying of the document in whole or in part without written permission of Jacobs constitutes an infringement of copyright. Jacobs does not warrant that this document is delivered free of error and does not accept liability for any loss caused or arising from reliance upon information provided herein.



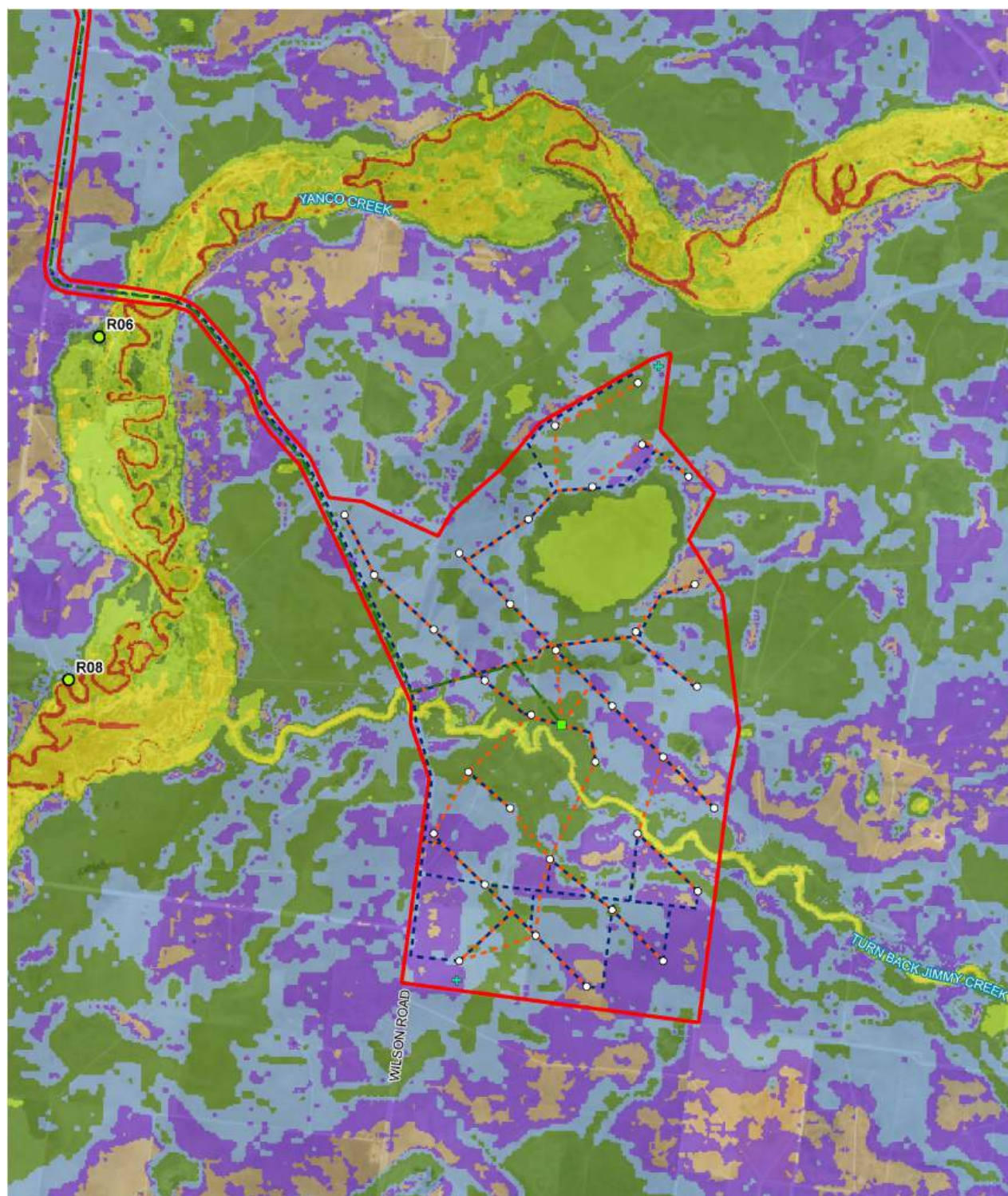






**Figure B-4 Flow velocities – PMF event (Sheet 2)**



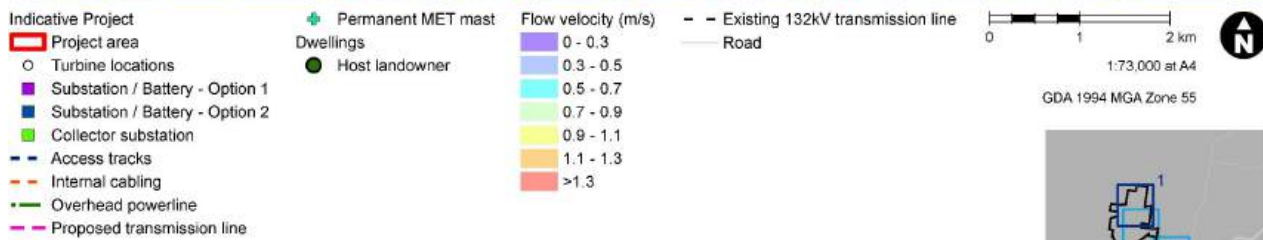
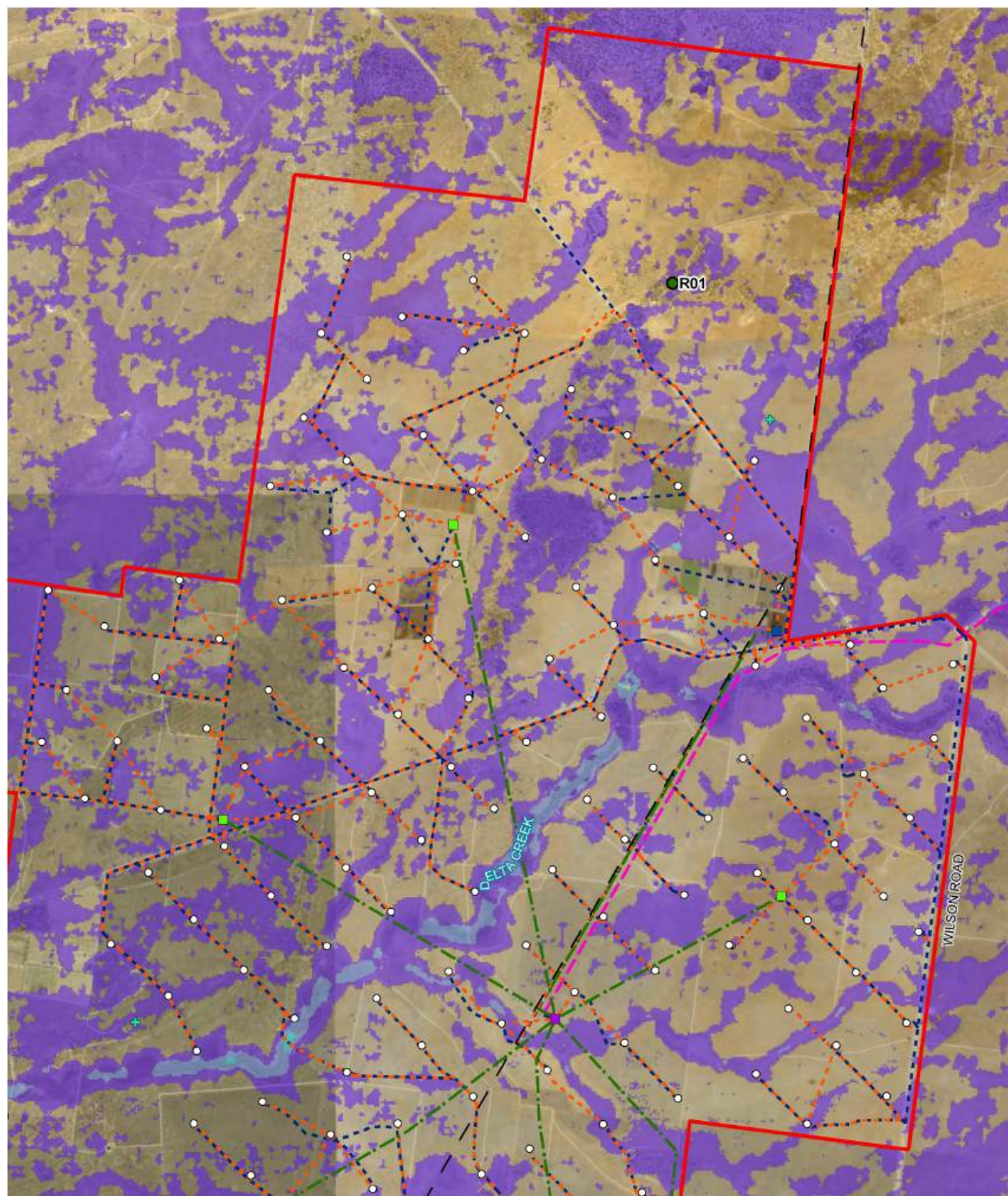


**Figure B-4 Flow velocities – PMF event (Sheet 3)**

Jacobs | NSW Special | Buildings & Infrastructure | Eastern Asia Pacific | www.jacobs.com

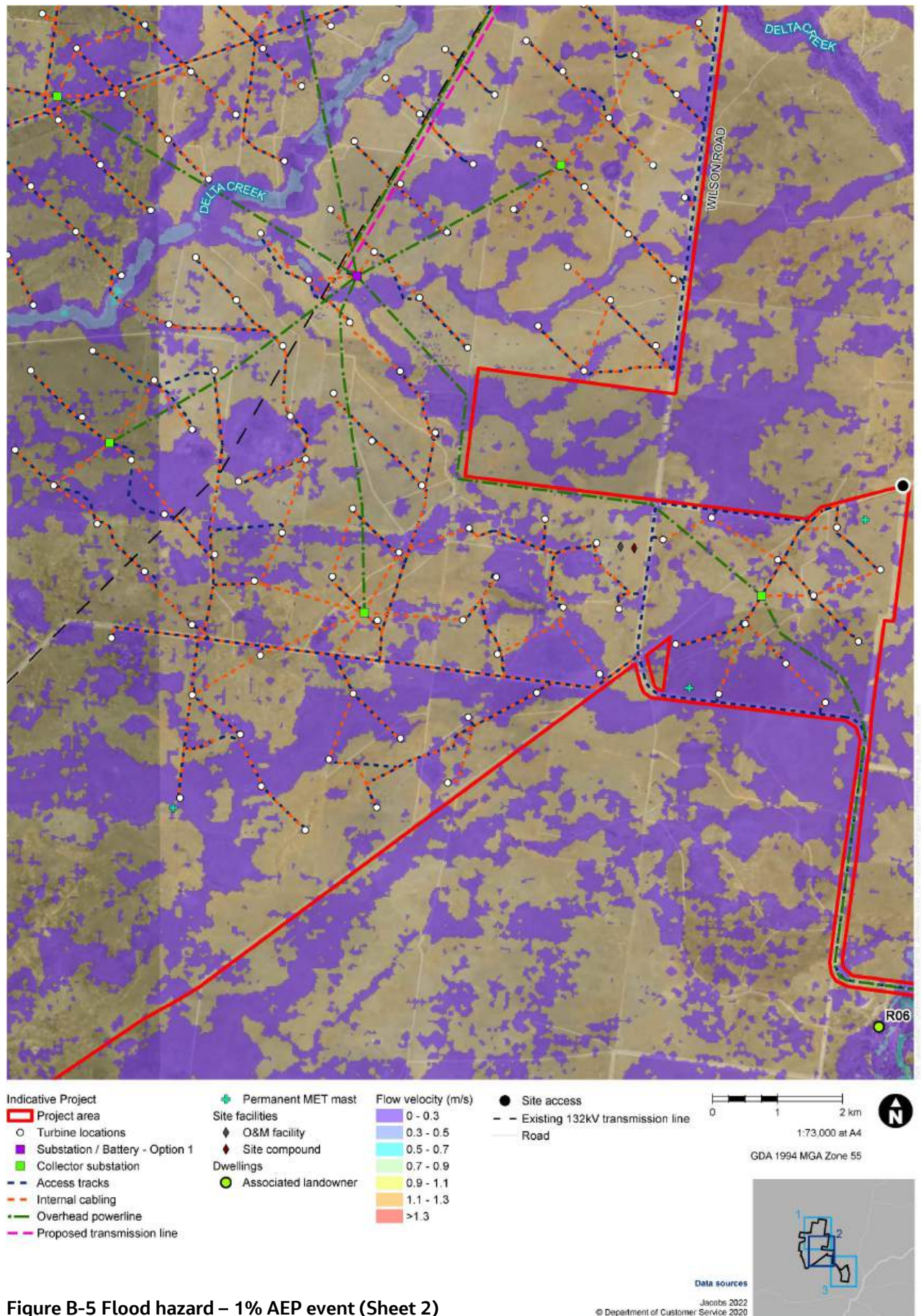
This information and concepts contained in this document are the intellectual property of Jacobs and are subject to the survey and detailed design. It is to be used for construction. Use or copying of the document in whole or in part without written permission of Jacobs constitutes an infringement of copyright. Jacobs does not warrant that this document is definitive nor free of error and does not accept liability for any loss caused or arising from its use or reliance on information provided herein.





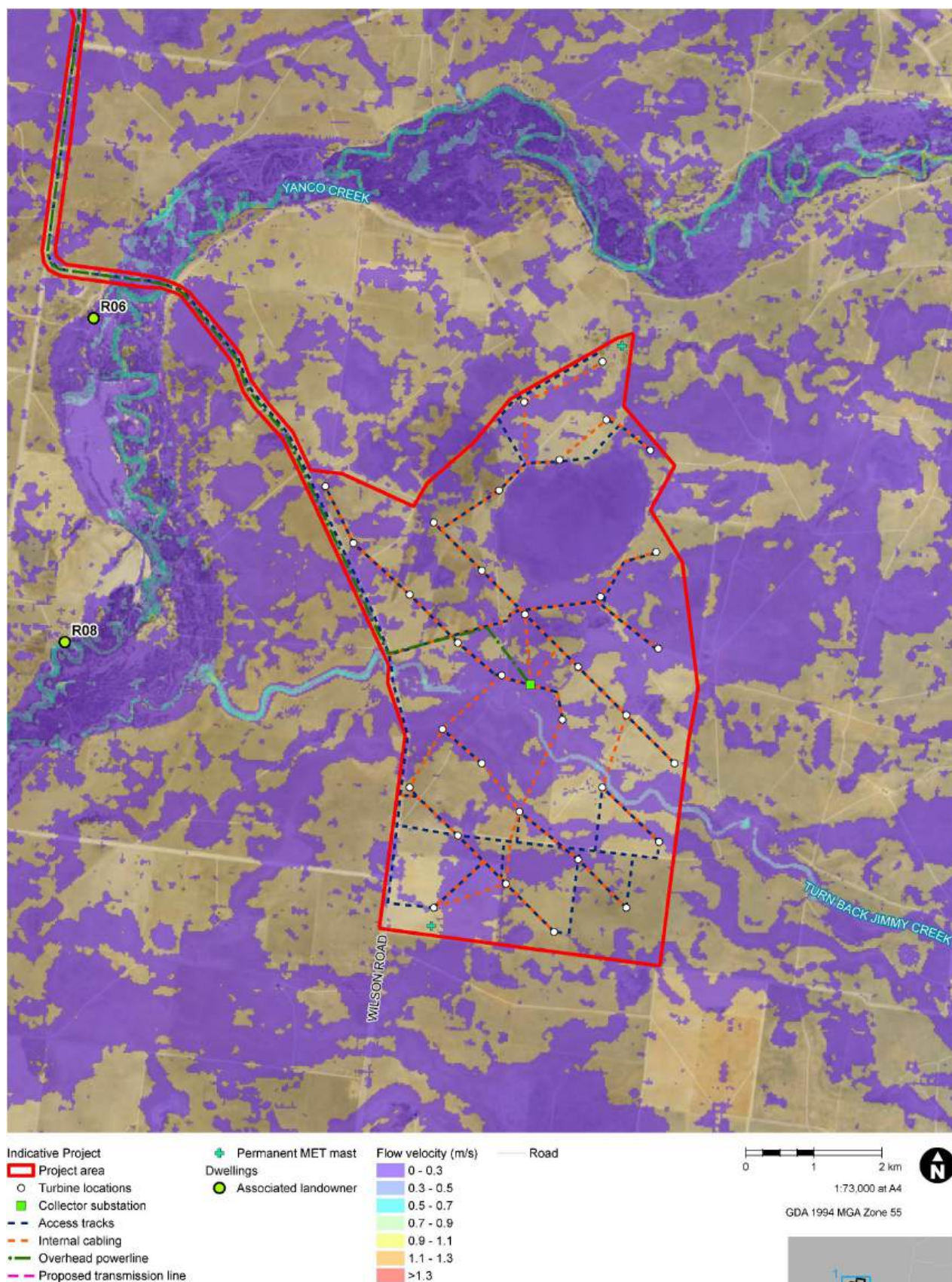
**Figure B-5 Flood hazard – 1% AEP event (Sheet 1)**





**Figure B-5 Flood hazard – 1% AEP event (Sheet 2)**





**Figure B-5 Flood hazard – 1% AEP event (Sheet 3)**

**Jacobs** NSW Special | Buildings & Infrastructure | Eastern Asia Pacific | www.jacobs.com

This information and concepts contained in this document are the intellectual property of Jacobs and are subject to the survey and detailed design. It is to be used for construction. Use or copying of the document in whole or in part without written permission of Jacobs constitutes an infringement of copyright. Jacobs does not warrant that this document is definitive nor free of error and does not acceptability for any loss caused or arising from its use or information provided herein.



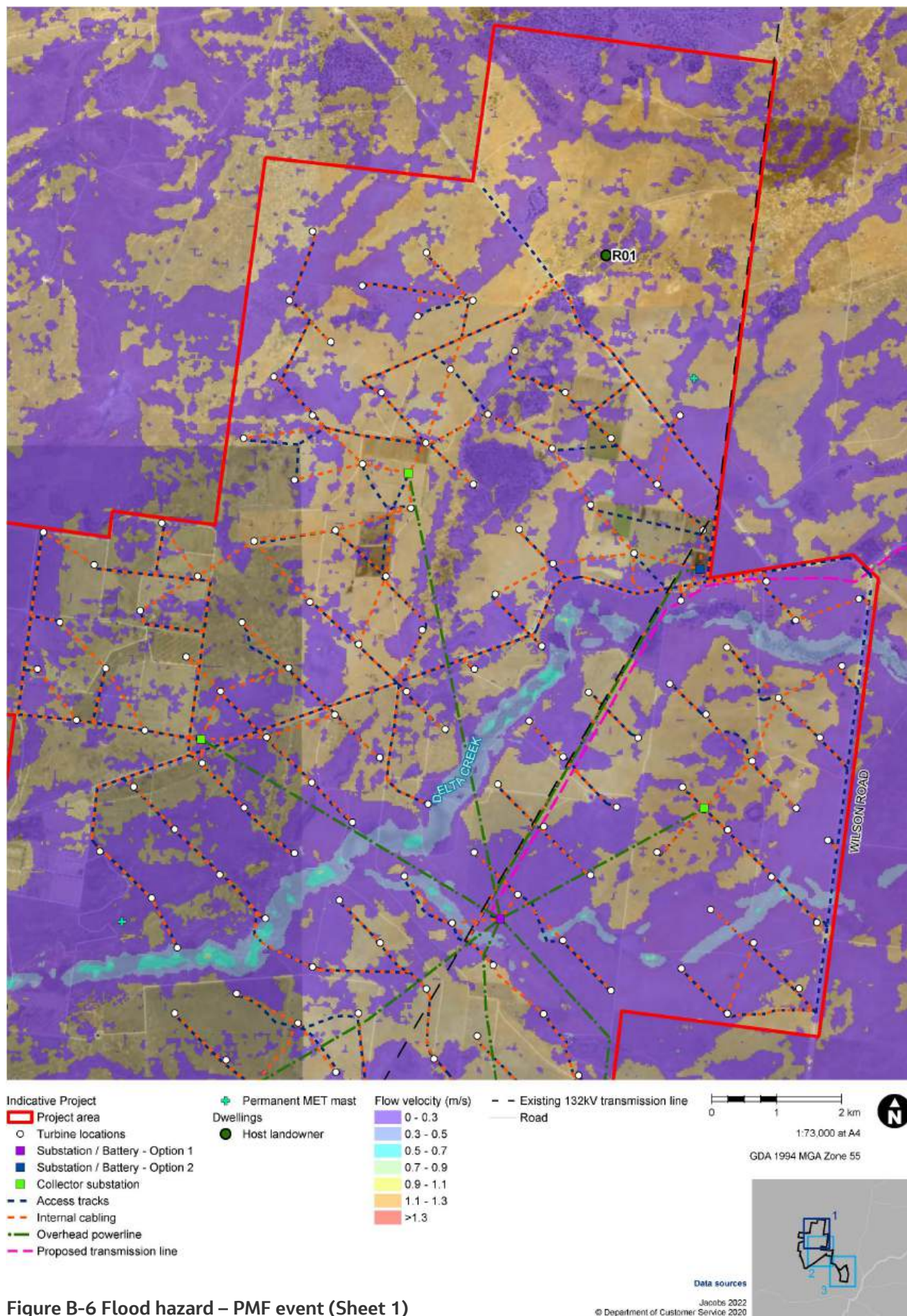
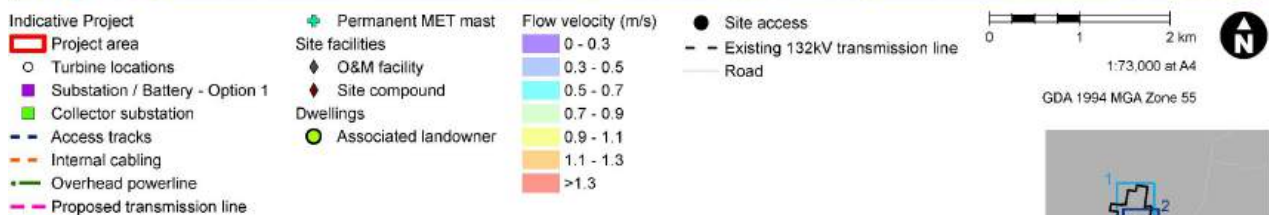
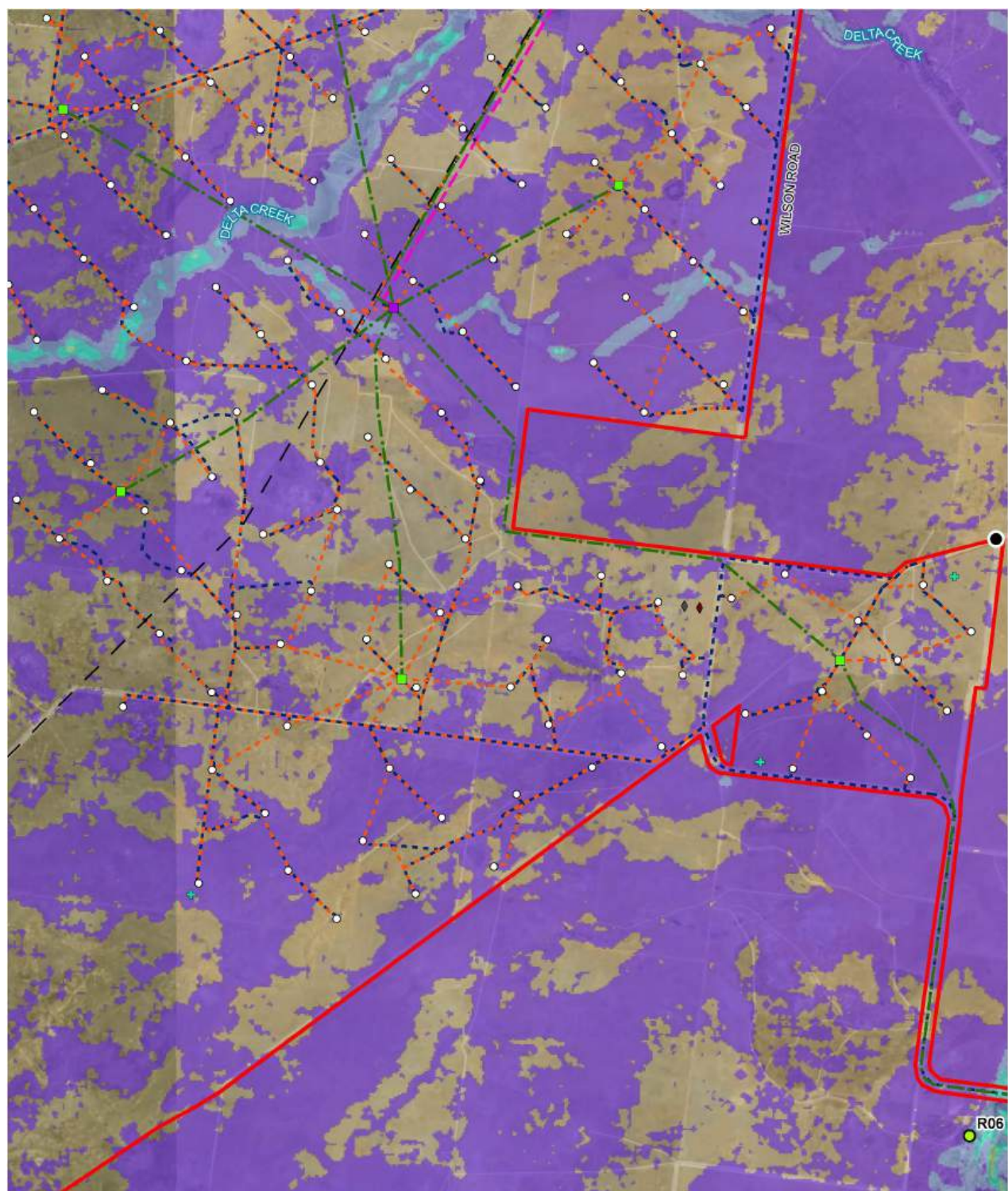


Figure B-6 Flood hazard – PMF event (Sheet 1)





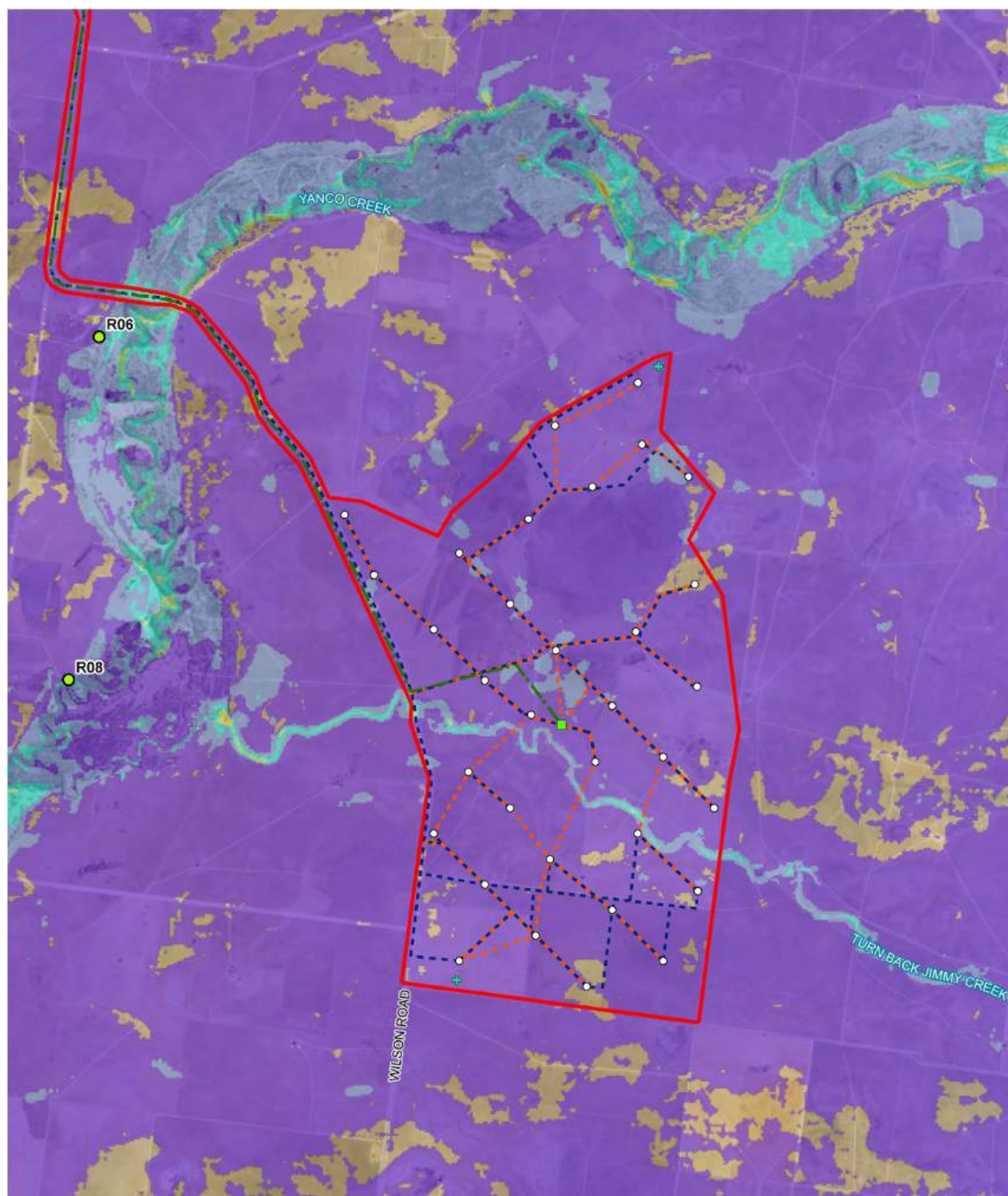
**Figure B-6 Flood hazard – PMF event (Sheet 2)**

**Jacobs** NSW Special | Buildings & Infrastructure | Eastern Asia Pacific | www.jacobs.com

Data sources  
Jacobs 2022  
© Department of Customer Service 2020

This information and concepts contained in this document are the intellectual property of Jacobs and are subject to the survey and detailed design. It is to be used for construction. Use or copying of the document in whole or in part without written permission of Jacobs constitutes an infringement of copyright. Jacobs does not warrant that this document is definitive nor free of error and does not accept liability for any loss caused or arising from its use or reliance on information provided herein.



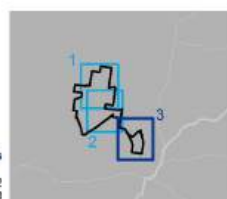


- Indicative Project**
- Project area
  - Turbine locations
  - Collector substation
  - Access tracks
  - Internal cabling
  - Overhead powerline
  - Proposed transmission line
- Dwellings**
- + Permanent MET mast
  - Associated landowner
- Flow velocity (m/s)**
- 0 - 0.3
  - 0.3 - 0.5
  - 0.5 - 0.7
  - 0.7 - 0.9
  - 0.9 - 1.1
  - 1.1 - 1.3
  - >1.3
- Road**
- Road

0 1 2 km  
1:73,000 at A4  
GDA 1994 MGA Zone 55

Data sources

Jacobs 2022  
© Department of Customer Service 2020



**Figure B-6 Flood hazard – PMF event (Sheet 3)**

**Jacobs** NSW Spatial | Buildings & Infrastructure | Eastern Asia Pacific | www.jacobs.com

This information and concepts contained in this document are the intellectual property of Jacobs and are subject to the survey and detailed design. It is to be used for construction. Use or copying of the document in whole or in part without the permission of Jacobs constitutes an infringement of copyright. Jacobs does not warrant that this document is definitive nor free of error and does not accept liability for any loss caused or arising from its use or reliance on information provided herein.