

# Yanco Delta Wind Farm Project

May 2025



# Acknowledgement of Country

Origin Energy acknowledges Aboriginal and Torres Strait Islander Peoples as the Traditional Owners of the lands.

We acknowledge the continuous connection to land, water, sea and sky and pay our respects to Elders past and present.



# Project Overview

# Yanco Delta Wind Farm at a glance

The Yanco Delta Wind Farm (the Project) is located across 33,000 ha of land approx. 10 km North West of Jerilderie, NSW.

## Key components of the Project include:

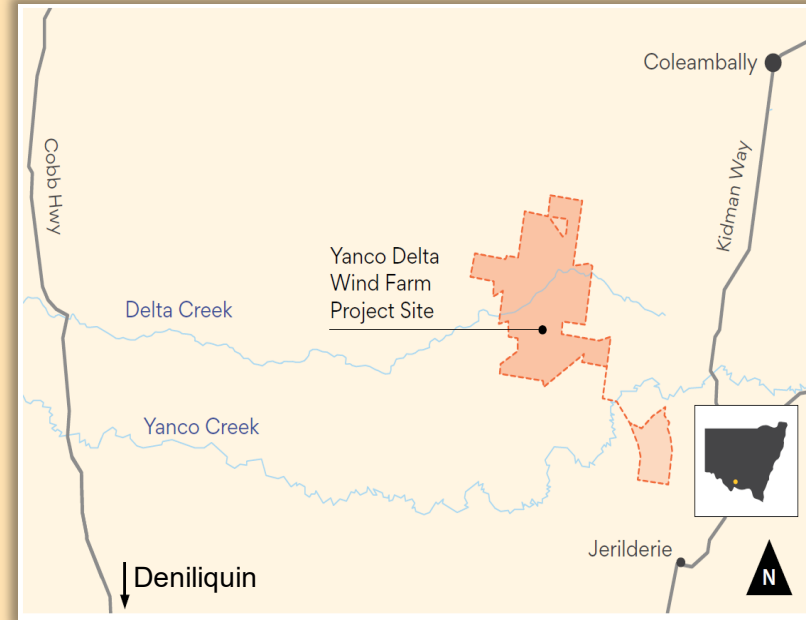
- Up to 208 wind turbines each with a maximum tip height of 270 m
- A total generation capacity of 1,500 MW (1.5 GW)
- A proposed grid connection to the Dinawan Substation
- A Battery Energy Storage System with a capacity of up to 800 MW / 800 MWh.

## Planning Approvals:

- NSW development approval granted on 21 December 2023
- Commonwealth approval granted on 20 February 2024.

## Access Rights:

The Project secured Access Rights to the South West Renewable Energy Zone for the Projects' full capacity in April 2025.



Project Location

- Origin acquired the Project from Virya Energy in May 2024 and assumed responsibility for all development activities.
- Constructability reviews have been undertaken with optimisations to design informed by:
  - Geotechnical investigations
  - Biodiversity surveys
  - Aboriginal cultural heritage surveys
  - Outcomes of ongoing consultation from landowners
  - Changes/ constraints due to future transmission projects
- Early Contractor Involvement (ECI), site investigations and associated data, along with extensive landowner consultation have indicated changes to the construction methodology and the location of some infrastructure components are required.
- Based on these changes a modification to the existing development approval is now necessary.



# Project Changes

# Key drivers of the modification

---

The modification is driven by the following:

## Construction phase

- Inclusion of onsite workforce accommodation facility
- Revised site access and internal haul roads
- Relocation and widening of access tracks and cable trenches
- Updated locations for compounds and batching plant
- Additional potential oversize / over mass transport routes

## Operational phase

- Turbine relocations
- Hardstand re-orientation and increase in disturbance footprint
- Relocation of central primary substation
- Consolidation collector substations
- Transmission line connection to Dinawan substation
- Internal transmission changes
- Updated operations and maintenance facilities

## Construction changes:

Change	Reasoning
<b>Construction and use of an onsite temporary workforce accommodation facility</b>	The Project's Environmental Impact Statement (EIS) proposed workforce would be housed locally, however a Workforce Accommodation Strategy indicates insufficient availability to support workforce needs.
<b>Changes to site access and internal haul road network</b>	Changes are driven by turbine delivery and civil contractor specifications, as well as landholder, biodiversity and heritage constraints identified through detailed surveys.
<b>Relocation and increased width of access tracks and cable trenching</b>	
<b>Changes to construction compounds and concrete batching plant</b>	
<b>Addition of potential oversize / over mass (OSOM) routes and associated road upgrades</b>	Response to delivery requirements from the turbine manufacturer and installer not previously allowed for in the Project.

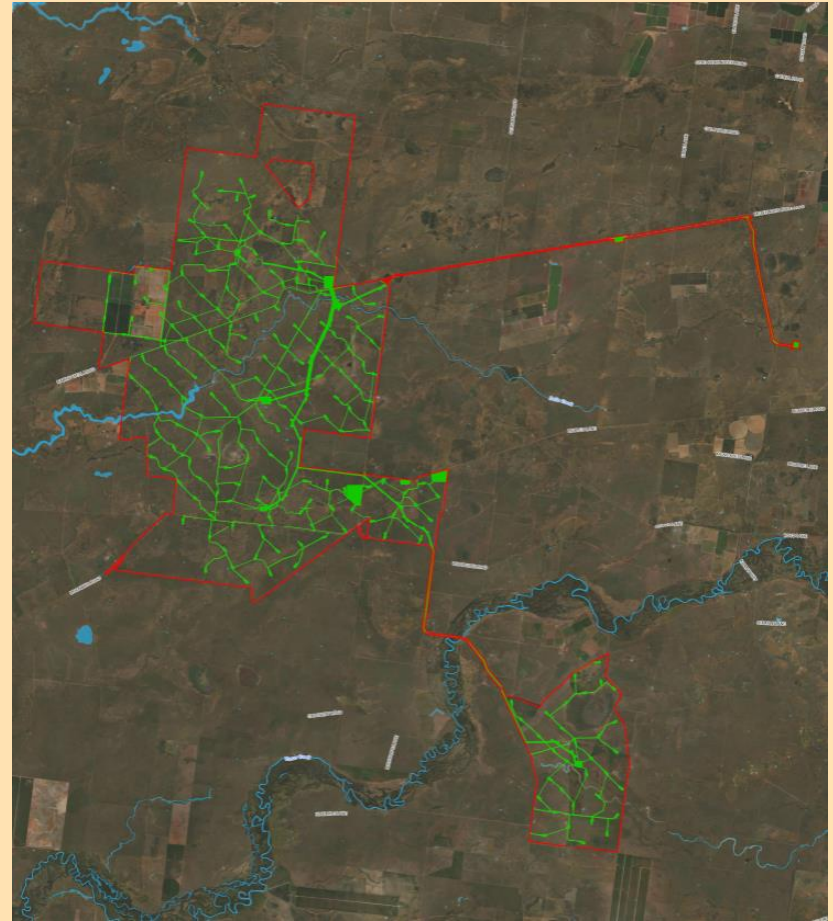


# Proposed modifications and rationale

## Operational changes:

Change	Reasoning
<b>Turbine location changes</b>	In response to identified landholder constraints, future transmission projects and biodiversity and heritage constraints identified through detailed surveys.
<b>Re-orientation of hardstands and increased disturbance footprint</b>	To facilitate safe and efficient worksites and in response to turbine delivery requirements and civil contractor specifications.
<b>Relocation of central primary substation</b>	
<b>Consolidation of internal collector substations</b>	To improve efficiency based on the technology that is being offered by the turbine supplier and installer.
<b>Changes to transmission line and connection to Dinawan substation</b>	In response to future transmission projects and biodiversity and heritage constraints identified through detailed surveys.
<b>Changes to project internal transmission</b>	In response to civil contractor specifications and turbine supplier and installer requirements.  Changes to internal transmission routes and footprint to align with Australian standards.
<b>Changes to operations and maintenance facilities</b>	

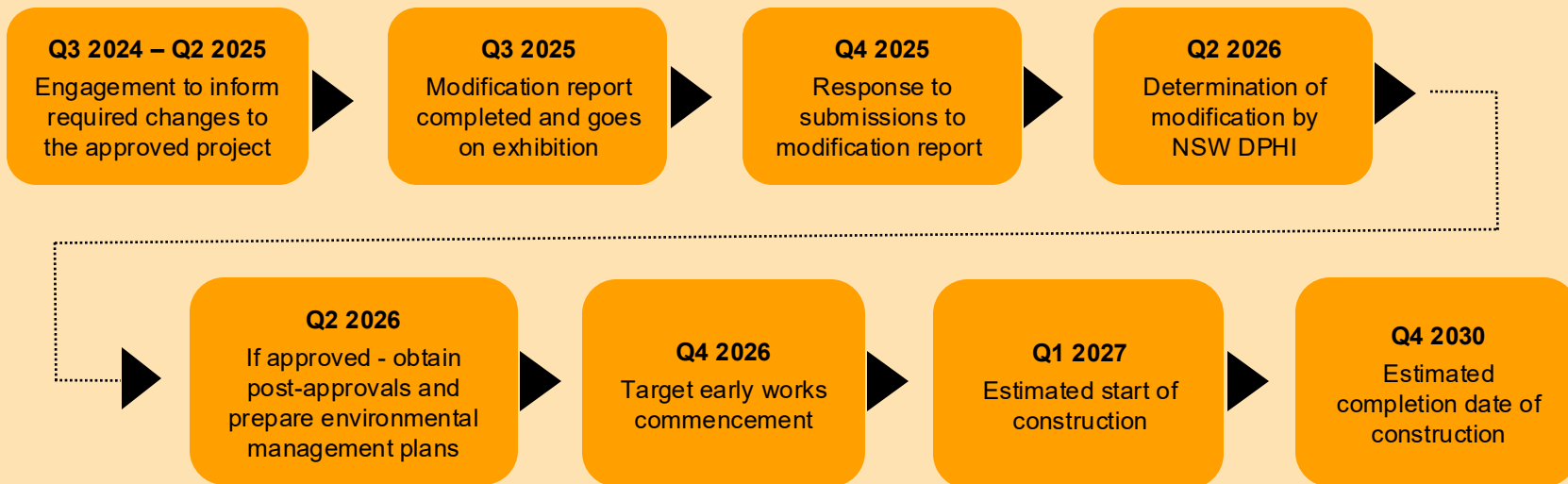
# Project layout



# Approvals Process

Origin will be submitting a modification report outlining the changes to the Project in Q3 of this year via the NSW Major Projects Planning Portal.

The NSW Department of Planning, Housing and Infrastructure (DPHI) will publicly exhibit the modification report for government agencies and public comment.



- The modified Project requires approval from the Commonwealth Government.
- The Commonwealth assesses projects if they are likely to have significant impacts to Matters of National Environmental Significance (MNES)
- Origin will be submitting **two referrals** under the *Commonwealth Environment Protection and Biodiversity Conservation Act 1999* (EPBC Act) - outlining the changes to the Project in May 2025:
  1. Wind farm
  2. Dinawan Transmission Line

## Approval Assessment Pathway



# Workforce Accommodation

# Workforce accommodation facility

- Original EIS underestimated the size of workforce required
- A workforce accommodation study identified the need to construct a temporary workforce accommodation facility
- The facility is to avoid impacts to availability and cost of local and regional rental accommodation
- The proposed temporary facility will:
  - Occupy approximately 15 ha of land within the Project boundary
  - Provide access to the facility off Liddles Lane
  - Accommodate up to 710 workers during the peak construction period
  - Consist of self-contained rooms, mess hall, recreation facilities, wastewater treatment plant, etc.
- A small portion of workers may use local short-term accommodation during the construction of the facility.



Note: This is an example of a temporary workforce accommodation facility. Design for the Project's facility is still being developed.

# Transmission Options



**Objective:** Optimise the transmission route from the Project to the Dinawan Substation and minimise impacts to community and environment.

Origin is working closely with:

- EnergyCo, Transgrid, and other Access Rights proponents
- Local Council representatives
- Adjacent landholders

To maintain flexibility during development, Origin is seeking approval for alternate route options:

- A corridor within the public road reserve similar to previous development approval
- Alternative route through private land adjacent to the road reserve
- Combination of the above two solutions.

# Grid connection transmission route planning

18

- Route comprises of approximately 27 km of transmission line generally following McInnons Bore Road and Cadell Road.
- Original development approval option is maintained with transmission located within McInnons Bore Road and Cadell Road easement areas.

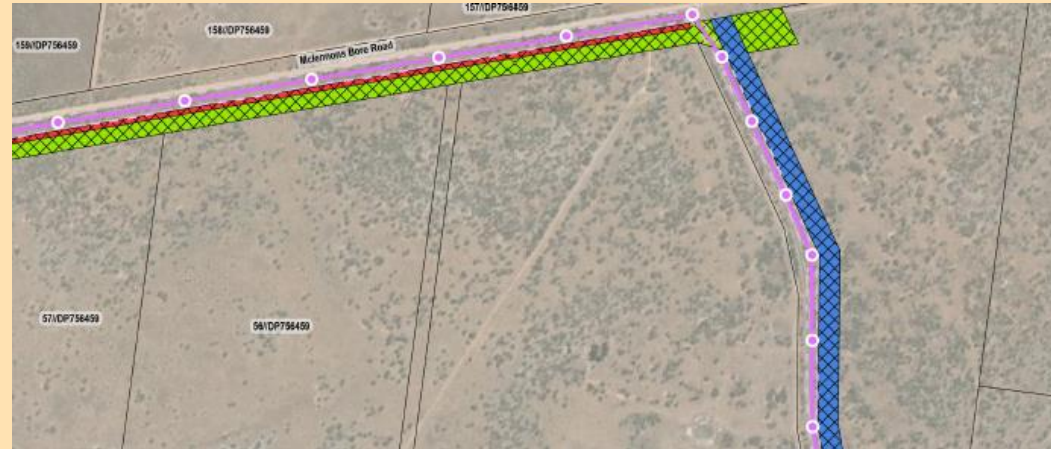


# Transmission route options

The proposed changes to the transmission route consider options to allow ongoing optimisations to minimise impacts. These include:

1. Project Energy Connect Crossing point is located south of McLennons Bore Road with an option to realign the road if required.
2. 60m easement to the South of McLennons Bore Road as per green area on the right.
3. 60m easement to the east of Cadell road, per blue area on picture.

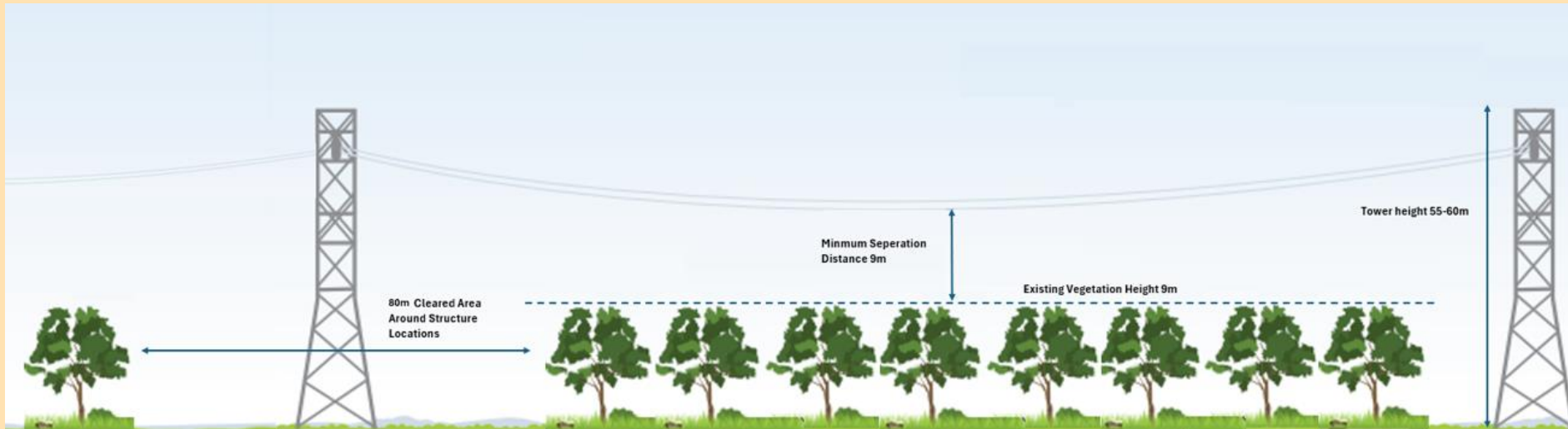
Generally, transmission routes are co-located with existing fire breaks to minimise vegetation impacts.



# Dinawan Connection Transmission options

Transmission within the road areas will adopt a *build over canopy approach* with lines strung over the top of vegetation to minimise impacts.

Areas cleared around structure locations will be partially rehabilitated after construction.



# Environmental and Aboriginal Cultural Heritage Values



# Biodiversity assessments

To assess the additional footprint required for safe turbine construction and to reduce impacts to native flora and fauna species.

## Studies

General studies include:

- Multiple field surveys and technical analyses across different seasons to capture seasonal variability of both flora and fauna
- Bird and bat surveys

## Reporting

Survey results will be presented in the modification report with a second report being prepared in December to include any additional surveys carried out in 2025.

## Offsets

Further, an Offset Delivery Strategy is currently being prepared for the Project.



## Key Species

Some of the species recorded in the Project area include:

- Winged Peppercress, Smooth Darling-pea and Chariot Wheels
- Habitat for the Southern Bell Frog
- Nesting and roosting habitat for the Superb Parrot and Southern Myotis (a micro bat)

## Avoidance Measures

Key avoidance and mitigation measures adopted include:

- Locating infrastructure in areas of non-native vegetation
- Modifying design to avoid habitat for the Plains-wanderer, a critically endangered bird
- Locating turbines at least 100 metres from biodiversity habitat features.



Aboriginal cultural heritage surveys have been carried out within the increased disturbance footprint. Both archaeologist and Registered Aboriginal Parties (RAPs) have been involved throughout the survey works.

The purpose of the surveys is to:

- **Identify and protect cultural heritage values** – locate and document significant Aboriginal sites, artefacts, or cultural landscapes to avoid disturbance or damage
- **Inform project design** – ensuring avoidance of areas of significance are avoided, where possible
- **Reduce project risk** – early identification of cultural heritage reduces the risk of delays, legal issues, or reputational harm later in the project lifecycle
- **Meet legal and regulatory requirements** – cultural heritage assessments in NSW are required under legislation (e.g. *National Parks and Wildlife Act 1974*, *Environmental Planning and Assessment Act 1979*) as part of the planning and approvals process.

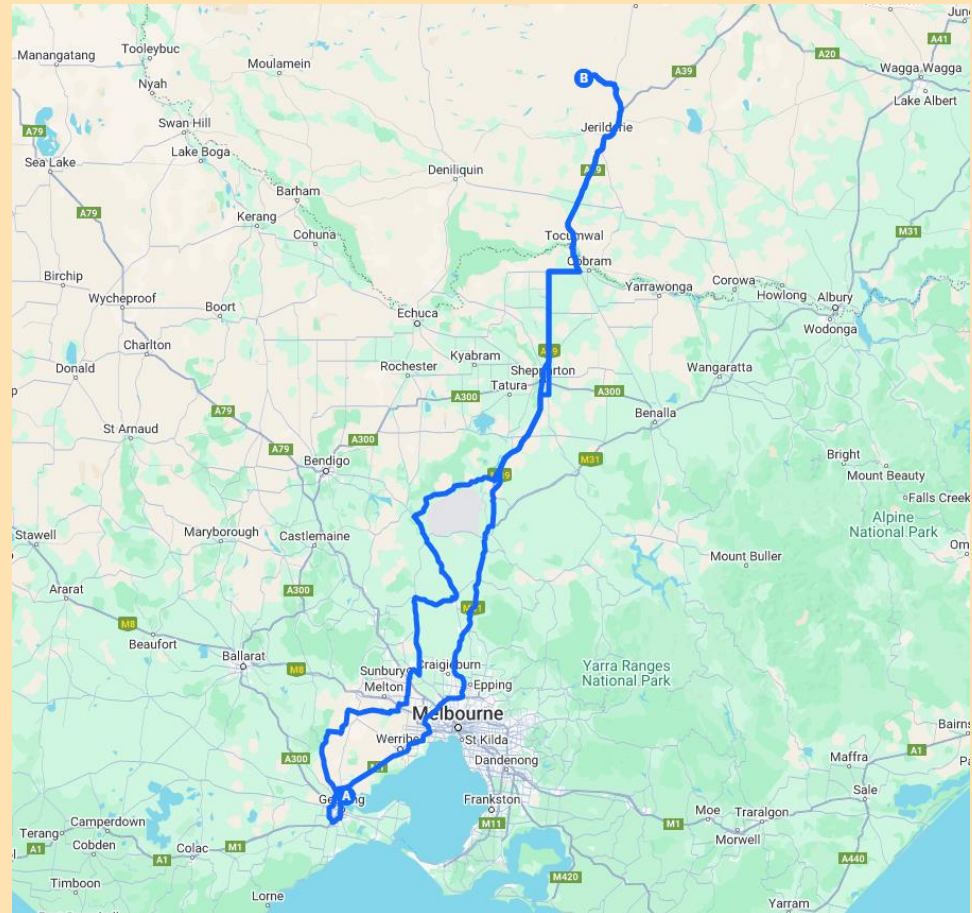
These surveys identify areas within the project footprint that have the potential to be impacted by construction activities so that they can be avoided or minimised.



# Traffic Management

# Approved route for oversize / over mass transportation

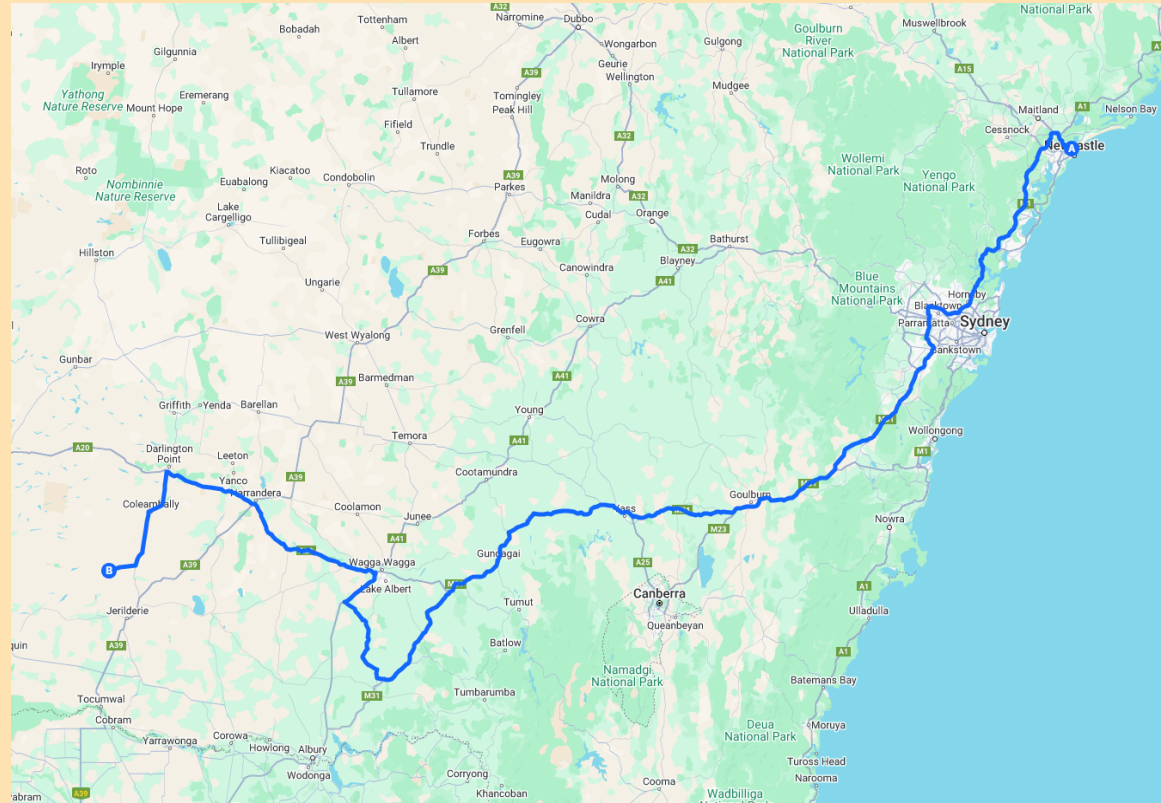
- The Figure shows the current approved route to transport oversize / over mass loads
- The route extends from the Port of Geelong in Victoria through to the Project site in NSW
- Origin is working to ensure transportation of equipment is conducted to minimise impact to communities
- The modification focuses on the route solely located within the State of NSW
- The portion of the route located in Victoria will be assessed by the Victorian Government's Department of Transport and Planning.



- Two additional OSOM routes are proposed:
  - Port of Newcastle (blades)
  - Port Adelaide (towers)
- These alternatives are proposed to reduce logistical risks and safeguard the project delivery schedule
- Origin is currently working with Transport for New South Wales and the Victorian and South Australian Governments to ensure impacts to traffic users are kept to a minimum, where possible
- Consultation with potentially impacted landowners and community will occur as the routes are assessed
- Further biodiversity and cultural heritage assessments may be required if changes to signage and roadways are necessary.

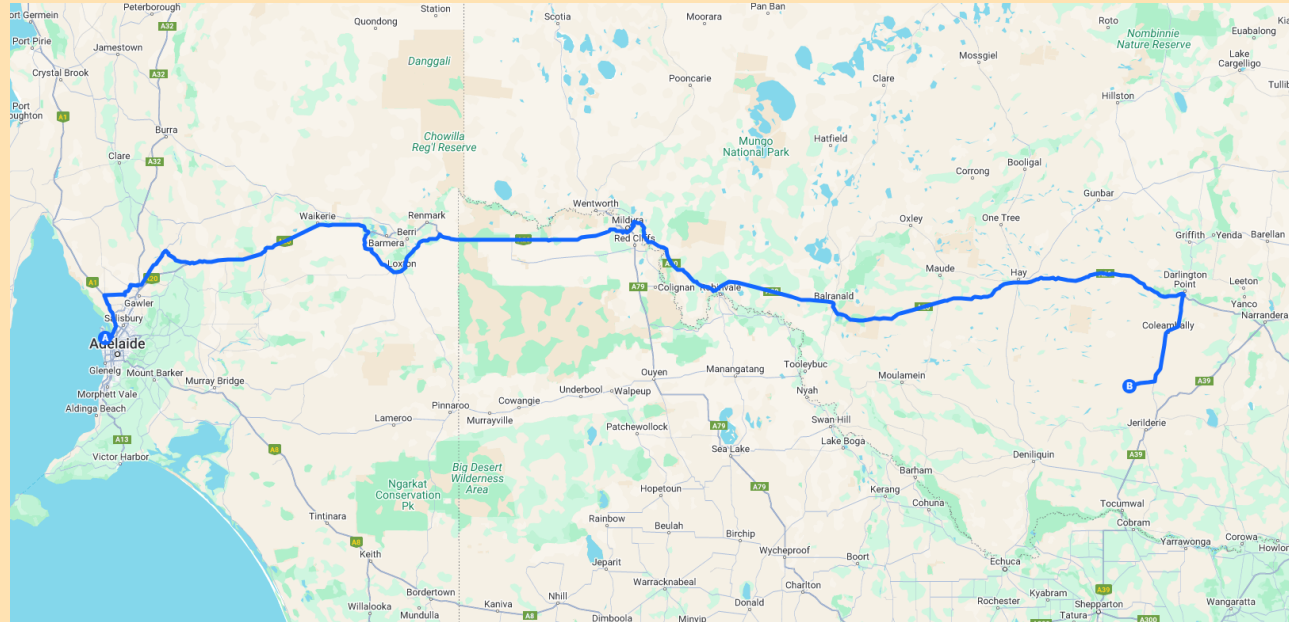
# Alternative oversize / over mass transportation routes

- This alternative route focuses on the transportation of blades from the Port of Newcastle to the Project site.



# Alternative oversized / over mass transportation routes

- This alternative route focuses on the transportation of tower components from Port Adelaide to the Project site
- The modification includes only the portion of the route located within the State of NSW
- The portion of the route within South Australia will be assessed by the South Australian Government's Department of Infrastructure and Planning.



# Other Required Assessments

- **Visual** - A landscape and visual impact assessment (LVIA) to re-assess viewpoints in accordance with NSW technical guidelines (DPHI 2024)
- **Noise** - Updated Noise and Vibration Impact Assessment (NVIA) to re-assess the impacts of the proposed modifications
- **Bushfire** - A Bush Fire Risk Assessment to identify potential bush fire related hazards and risks associated with the proposed modifications
- **Social** - A Social Impact Assessment (SIA) is being prepared in accordance with NSW guidelines (DPHI 2023)
- **Cumulative impacts** - All technical assessments being prepared for the project will include an assessment of cumulative impacts with consideration of nearby developments.

# Community Consultation



Origin is committed to genuine, proactive and transparent engagement with the community and stakeholders.

## Engagement to date

- Discussions and consultation with host landowners including:
  - Turbine and infrastructure locations
  - Property-specific land use and constraints
  - Required site surveys and investigations
- Ongoing engagement with neighbours including advance notice of site activities
- Meetings and correspondence with local council, NSW State and Commonwealth Governments
- Community information sessions – Jerliderie, Coleambally and Conargo
- Support for community events and clubs e.g. Jerliderie fun fair, local sporting clubs and events.

## Upcoming engagement

- In person meetings with the Local Aboriginal Land Councils (LALC), the Cummeragunja LALC and Griffith LALC
- In person drop-in sessions will be held in community during the public exhibition.



Further information is available at  
[www.yancodelta.com.au](http://www.yancodelta.com.au)