

Yanco Delta Wind Farm

Modification Fact Sheet



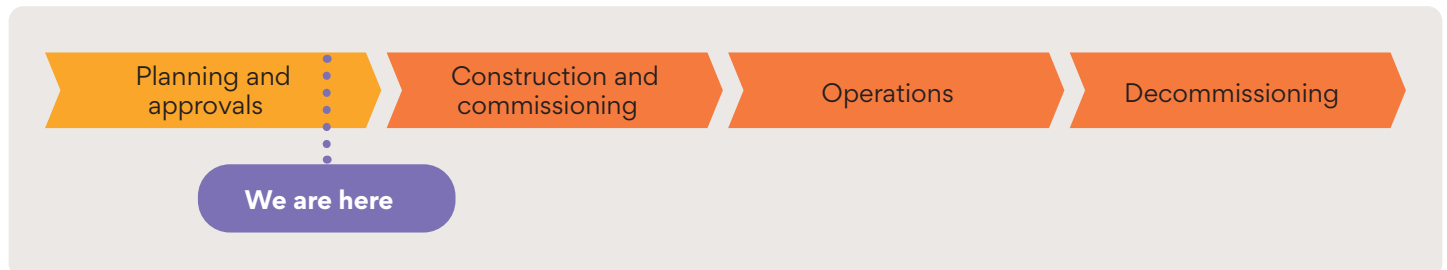
Project background

Yanco Delta Wind Farm (the project) is a 1.5GW wind farm comprising up to 208 turbines, with an option for a battery energy storage system (BESS) with a capacity of up to 800 MW/800 MWh. The project lies within the New South Wales (NSW) Government-designated South West Renewable Energy Zone (REZ).

In May 2024, Origin acquired the Project from Virya Energy and became responsible for all development activities. The project is currently in the planning and approvals phase.

Project approvals

The project received planning approval for the construction, operation, maintenance and decommissioning from the New South Wales (NSW) Government on 21 December 2023. Further Commonwealth approval was received on 20 February 2024 under the *Environmental Protection and Biodiversity Conservation Act* (EPBC) in February 2024.



Project refinement

Detailed analysis undertaken during the Early Contractor Involvement (ECI) tender processes, combined with further feedback from landholders and recent site investigations and surveys, confirmed changes to the project's construction methodology and infrastructure components would be required. These changes require a modification to both the NSW State development approval and new referral under the Commonwealth's EPBC Act.

The proposed modifications to the project include:

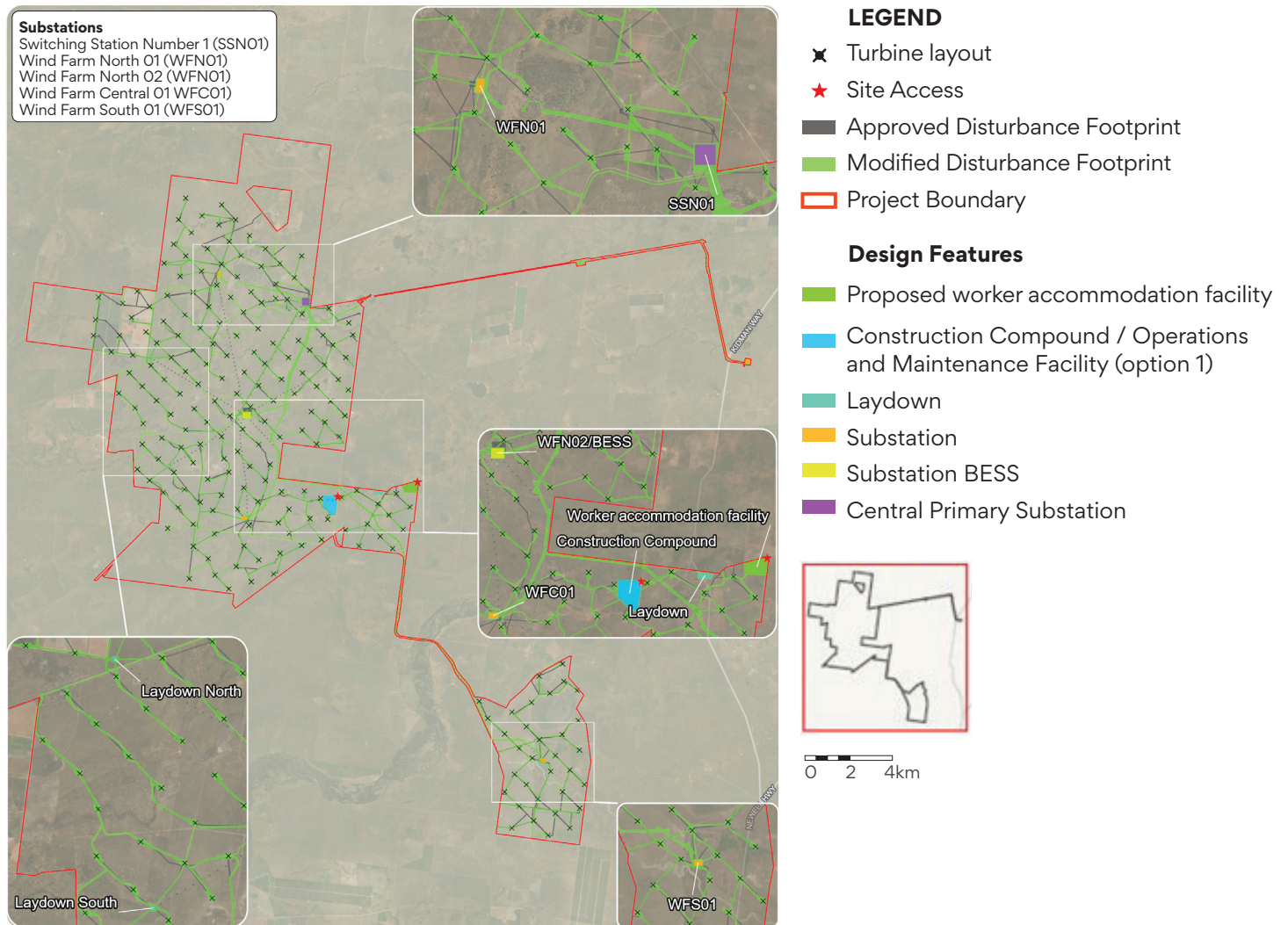
Construction

- Construction and use of a temporary onsite worker accommodation camp and associated ancillary facilities
- Road network changes, including the addition of potential oversized/over mass (OSOM) routes, and changes to site access points and internal haul roads
- Relocation and widening of access tracks and cable trenching routes
- Changes to construction compounds and the concrete batching plant.

Operational phase

- Turbine location changes and increased disturbance footprint
- Changes to central primary substation and collector substations
- Changes to Dinawan Substation transmission line connection and internal project transmission line
- Changes to operations and maintenance facilities.

Proposed modifications map



Technical assessments

Further assessments have been undertaken to determine the potential impact the modifications may have at the site. These assessments have been undertaken in accordance with the *NSW State Significant Development Guidelines – preparing a modification report (July 2021)*, and include:

- Geotechnical investigations
- Biodiversity assessments
- Aboriginal cultural heritage
- Visual amenity
- Traffic impact assessment
- Noise and vibration
- Bushfire risk assessment
- Social impact assessment
- Cumulative impact assessment

Next steps

Origin is currently finalising the technical studies and surveys required to assess the proposed project changes. These technical studies and associated impacts will be detailed in the modification application.

The modification will be publicly exhibited on the NSW Major Project Planning Portal Website for 28 days, at which point community members will have the opportunity to comment. Origin will notify the community once dates are confirmed.

Origin will hold further drop-in sessions for the community during the modification's public exhibition period. These sessions will provide an opportunity for community members to talk to Origin representatives and ask questions about the project and the proposed modifications.

Contact us

If you have any questions or feedback, we want to hear from you.

✉ powerdevelopmentprojects@originenergy.com.au

📞 1800 677 315

Scan the QR CODE
or visit

www.yancodelta.com.au
for more information about
Origin's Yanco Delta Wind
Farm project.

