

Yanco Delta Wind Farm

Project Fact Sheet



Project background

The Yanco Delta Wind Farm (the project) is located in the New South Wales (NSW) Government-designated South West Renewable Energy Zone (REZ), and spans approximately 33,000 hectares, 10 km north-west of Jerilderie, in the Riverina Murray Region. The project lies within the Local Government Areas of Murrumbidgee Council and Edward River Council and is located on Wiradjuri Country.

In May 2024, Origin acquired the Project from Virya Energy and became responsible for all development activities.

The project is currently in the planning and approvals phase, and Origin is committed to working closely with the local community and broader region throughout its development.

Project features

Yanco Delta includes a 1.5GW wind farm, with up to 208 turbines and an option for an 800 MWh battery. Connecting to Dinawan Substation in the NSW South West REZ, the project will generate enough electricity to power 750,000+ households* once operational.



Location

10km north-west of Jerilderie, NSW



Wind Turbines

Up to 208 with tip heights of up to 270m



Proposed Connection

Dinawan Substation



Host Landholders

8



Total Generation Capacity

1,500MW (1.5GW)



Equivalent Power

Enough to power approx. 750,000+ households



CO2 Avoidance

Up to 3.3-4.5 million tonnes CO2-e per annum



Approval for BESS

800MW / 800MWh



Future Ready

Supports Australia's renewable energy net-zero targets

*Estimate based on an average household consuming ~6,000kWh of network electricity per year (~16kWh/day/household) and an approximate net average wind farm export of 4,500,000MWh/yr.

Project benefits

The project is expected to bring significant social and economic benefits to the local area and surrounding region, including:

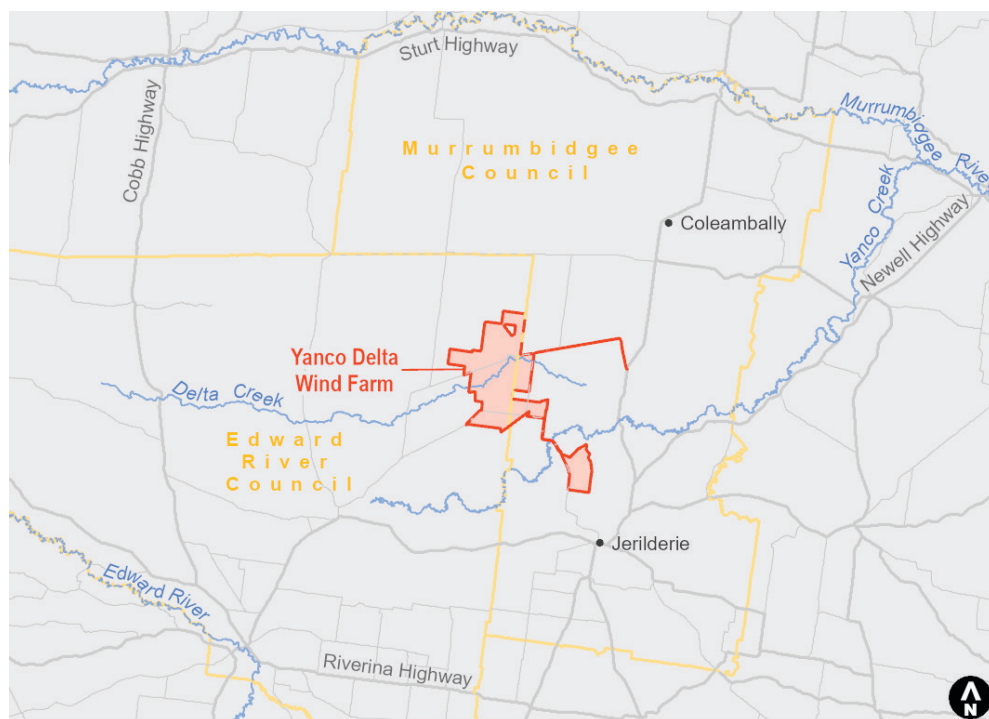
- A comprehensive **Yanco Delta Wind Farm Shared Benefits Program**, which includes regulated and voluntary financial contributions to support important local initiatives. This includes two \$5 million Voluntary Planning Agreements (VPAs) with Murrumbidgee and Edward River Councils, as well as access right fees contributing to EnergyCo's Community and Employment Benefit Program.
- Opportunities for local contractors, suppliers and businesses, including long term skills and capability development, commercial partnerships and procurement
- The creation of approximately **790 jobs during the peak of construction**, with around 30 jobs required during ongoing operations, over the project's life.
- Delivery of **low-cost, renewable energy to the grid**, supporting Australia's goal of 82% renewable energy by 2030 and the 2050 net-zero emissions targets.

Industry and Aboriginal Participation Plan (IAPP)

Origin is committed to ensuring the local community and First Nations groups benefit from the Yanco Delta Wind Farm through meaningful employment, training and supply chain opportunities. We will work with our Balance of Plant and Turbine Supply Installer (TSI) contractors to deliver the project's IAPP, maximising local content through partnerships with local businesses, training providers and community organisations.

Origin will commit an additional \$2 million to fund partnerships aimed at supporting First Nations participation, local supply chain development, innovation and workforce training.

Project map



Contact us

If you have any questions or feedback, we want to hear from you.

✉ powerdevelopmentprojects@originenergy.com.au

☎ 1800 677 315

Scan the QR CODE
or visit

www.yancodelta.com.au
for more information about
Origin's Yanco Delta Wind
Farm project.

