

# Yanco Delta Wind Farm



## Progress update

We are writing to provide you with an update on the progress of Yanco Delta Wind Farm, and to continue our commitment to keeping you informed throughout the process. This follows our previous update in July 2025 and forms part of our ongoing engagement with the community.

As you may be aware, with the Modification Scoping Report lodged to NSW Department of Planning, Housing and Infrastructure (DPHI), our team is now addressing the requirements issued by DPHI and engaging with key government authorities to finalise the Modification Application.

### Project update

The Modification Scoping Report outlines changes to the construction methodology and location of some infrastructure components.

The report can be viewed online at the NSW Planning Portal: [www.planningportal.nsw.gov.au//major-projects/projects/mod-2-worker-accommodation-facility-and-infrastructure-changes](http://www.planningportal.nsw.gov.au//major-projects/projects/mod-2-worker-accommodation-facility-and-infrastructure-changes)

Key changes include location of onsite temporary worker accommodation for the construction workforce, refinements to access routes for light vehicles and workforce transport arrangement, and consideration of water supply options in coordination with Murrumbidgee Council and existing site infrastructure.

To support the modification application process, we have completed a range of surveys and investigations, including:

- Additional geotechnical investigations to inform technical assessments relating to the project footprint
- Further biodiversity surveys to ensure potential impacts are appropriately understood and assessed
- Further Aboriginal cultural heritage survey and test excavation activities in consultation with Registered Aboriginal parties (RAPs) and Heritage NSW
- Additional oversize/overmass (OSOM) route assessments and traffic surveys to review potential traffic impacts, access logistics and options.

These activities are required to gather relevant information to complete the modification documentation and do not indicate that construction works are commencing.

### Next steps

Community engagement and feedback has been central to our approach. Following community consultation in May 2025 and listening to community needs, we continue to refine the project design as we work towards the modification application submission.

Once the application is submitted via the NSW Major Projects Planning Portal, there will be opportunity for the public to review the modification and make a submission. We will host community information sessions across the region during this exhibition period, where we will have relevant subject matter experts on hand to answer your questions.

### Connect with us

If you'd like to meet with representatives of the project team to discuss our modification application, please get in touch.

Thank you for your ongoing interest and involvement in the project, we look forward to sharing more updates regarding the Yanco Delta Wind Farm progress.

Kind regards,

The Yanco Delta Wind Farm Community Team

✉ [powerdevelopmentprojects@originenergy.com.au](mailto:powerdevelopmentprojects@originenergy.com.au)

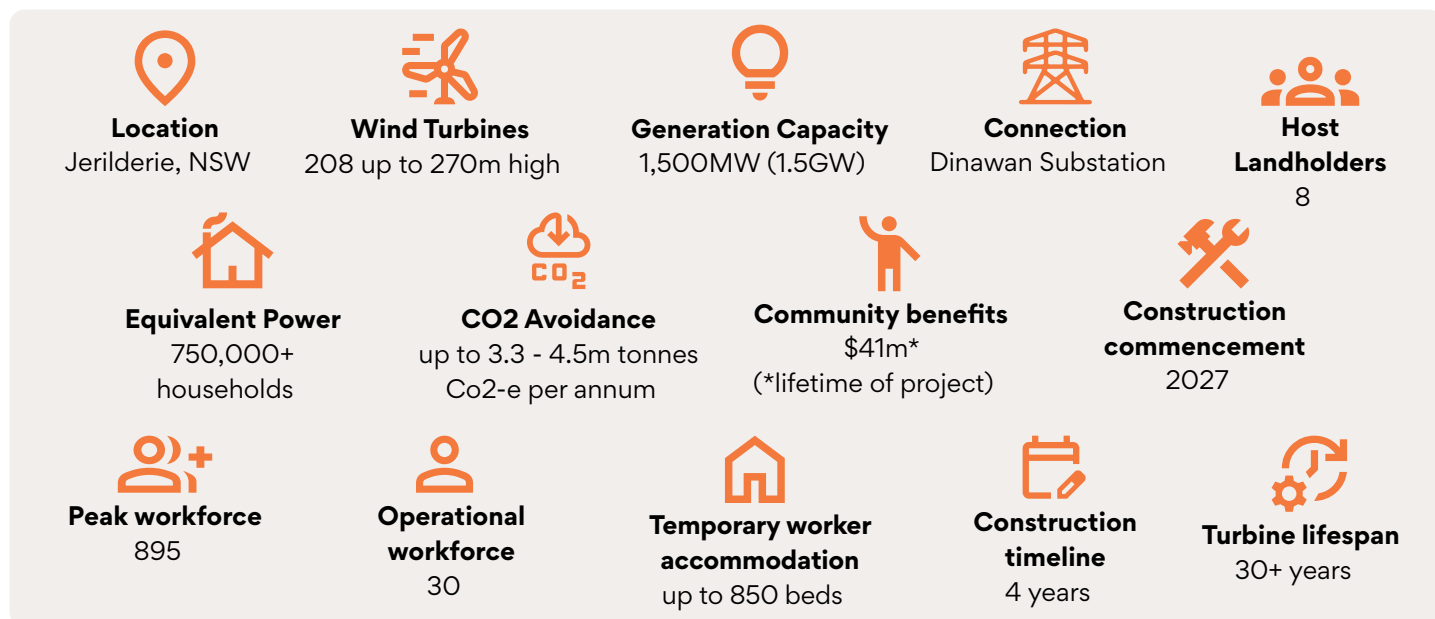
☎ 1800 677 315

📷 Scan QR CODE to subscribe for project updates or visit [www.yancodelta.com.au](http://www.yancodelta.com.au)



# Yanco Delta Wind Farm project snapshot

Yanco Delta is one of the largest wind and energy storage projects in New South Wales, with a proposed generation output of 1.5GW. Situated within the designated South West Renewable Energy Zone (REZ), the project area covers 33,000 hectares between the towns of Jerilderie and Coleambally within the Murrumbidgee and Edward River Council areas.

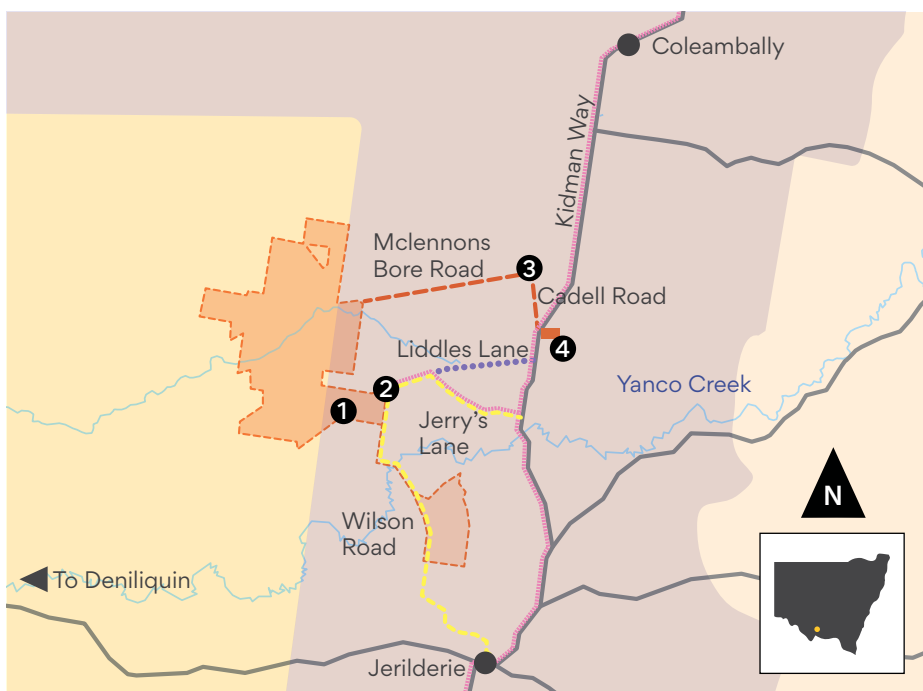


## Benefits

The Yanco Delta Wind Farm is set to deliver major economic benefits for the Riverina region and create hundreds of jobs during construction and operation. The project will also make voluntary contributions totalling \$31 million which will be directed towards neighbourhood benefits, community and indigenous investment programs, as well as a program of regional strategic partnerships.




The neighbourhood benefits program alone will provide those closest to the project area with an opportunity to access a range of Origin's products and services. These are on top of regulated contributions like the \$10 million Voluntary Planning Agreements (VPA) struck with Murrumbidgee and Edward River Councils, of which \$5 million has been committed to the construction of a new medical centre in Jerilderie, and access fees paid to EnergyCo's Community and Employment Benefit Program.

## Project map




-  Yanco Delta Wind Farm Project Site
-  Murrumbidgee Council
-  Edward River Council


- 1** Temporary worker accommodation location
- 2** Site access point
- 3** Proposed transmission line
- 4** Dinawan Substation

-  Heavy vehicle route
-  OSOM
-  Light vehicle route

## Contact us

 [powerdevelopmentprojects@originenergy.com.au](mailto:powerdevelopmentprojects@originenergy.com.au)

 1800 677 315

 Scan QR CODE to subscribe for project updates or visit [www.yancodelta.com.au](http://www.yancodelta.com.au)

